

cPLA2(Phospho Ser505) Polyclonal Antibody

Description

Product type	Primary Antibody
Code	BT-AP00470
Host	Rabbit
Isotype	IgG
Size	100ul, 50ul, 20ul
Immunogen	The antiserum was produced against synthesized peptide derived from human c-PLA2 around the phosphorylation site of Ser505. AA range:471-520
Mol wt	85211
Species reactivity	Human, Mouse, Rat
Clonality	Polyclonal
Recommended application	WB, IHC-p, IF, ICC, ELISA
Concentration	1 mg/ml
Full name	Cytosolic phospholipase A2
Synonyms	Cytosolic phospholipase A2; PLA2G4A; CPLA2; PLA2G4; Cytosolic phospholipase A2; cPLA2; Phospholipase A2 group IVA

This product is for research use only, not for use in human, therapeutic or diagnostic procedure.

Background

This gene encodes a member of the cytosolic phospholipase A2 group IV family. The enzyme catalyzes the hydrolysis of membrane phospholipids to release arachidonic acid which is subsequently metabolized into eicosanoids. Eicosanoids, including prostaglandins and leukotrienes, are lipid-based cellular hormones that regulate hemodynamics, inflammatory responses, and other intracellular pathways. The hydrolysis reaction also produces lysophospholipids that are converted into platelet-activating factor. The enzyme is activated by increased intracellular Ca²⁺ levels and phosphorylation, resulting in its translocation from the cytosol and nucleus to perinuclear membrane vesicles. Alternative splicing results in multiple transcript variants.

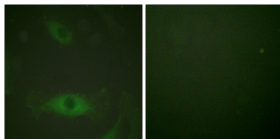
Recommended Dilution

ICC: 1: 200 - 1: 1000

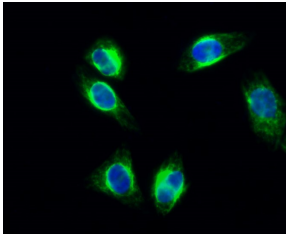
ELISA: 1: 10000

Not yet tested in other applications.

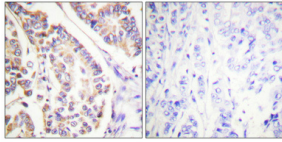
Images



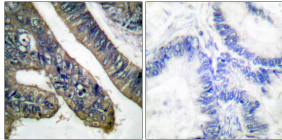
Immunofluorescence analysis of HeLa cell. 1,cPLA2 (phospho Ser505) Polyclonal Antibody(Green) was diluted at 1:200(4°C overnight). 2, DAPI(blue) 10min.



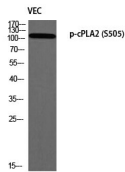
Immunofluorescence analysis of HeLa cells treated with TNF-a 20nM 15', using c-PLA2 (Phospho-Ser505) Antibody. The picture on the right is blocked with the phospho peptide.



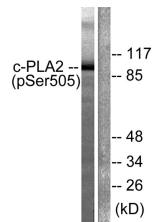
Immunohistochemical analysis of paraffin-embedded Human breast cancer. Antibody was diluted at 1:100(4°C overnight). High-pressure and temperature Tris-EDTA,pH8.0 was used for antigen retrieval. Negative contrl (right) obtained from antibody was pre-absorbed by immunogen peptide.



Immunohistochemistry analysis of paraffin-embedded human colon carcinoma, using c-PLA2 (Phospho-Ser505) Antibody. The picture on the right is blocked with the phospho peptide.



Western blot analysis of VEC using p-cPLA2 (S505) antibody. Antibody was diluted at 1:1000



Western blot analysis of lysates from HeLa cells treated with TNF-a 20ng/ml 30', using c-PLA2 (Phospho-Ser505) Antibody. The lane on the right is blocked with the phospho peptide.

Storage

-20°C for 1 year

501 Changsheng S Rd, Nanhu Dist, Jiaxing, Zhejiang, China

Tel: 86 21 31007137 | E-mail: save@bt-laboratory.com | www.bt-laboratory.com