

ANT3 Polyclonal Antibody

Description

Product type	Primary Antibody
Code	BT-AP00471
Host	Rabbit
Isotype	IgG
Size	20ul, 50ul, 100ul
Immunogen	The antiserum was produced against synthesized peptide derived from human SLC25A6. AA range:121-170
Mol wt	32866
Species reactivity	Human
Clonality	Polyclonal
Recommended application	WB, IHC-p, ELISA
Concentration	1 mg/ml
Full name	ANT3 Antibody
Synonyms	SLC25A6; ANT3; CDABP0051; ADP/ATP translocase 3; ADP; ATP carrier protein 3; ADP,ATP carrier protein, isoform T2; ANT 2; Adenine nucleotide translocator 3; ANT 3; Solute carrier family 25 member 6

This product is for research use only, not for use in human, therapeutic or diagnostic procedure.

Background

SLC25A6 is a member of the mitochondrial carrier subfamily of solute carrier protein genes. The product of this gene (solute carrier family 25 member 6) functions as a gated pore that translocates ADP from the cytoplasm into the mitochondrial matrix and ATP from the mitochondrial matrix into the cytoplasm. The protein is implicated in the function of the permeability transition pore complex (PTPC), which regulates the release of mitochondrial products that induce apoptosis. The human genome contains several non-transcribed pseudogenes of SLC25A6.

Recommended Dilution

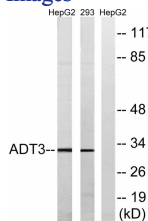
WB: 1: 500 - 1: 2000

IHC: 1: 100 - 1: 300

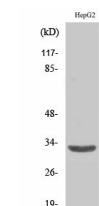
ELISA: 1: 40000

Not yet tested in other applications.

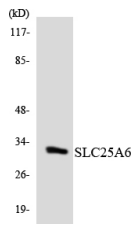
Images



Western blot analysis of lysates from HepG2 and 293 cells, using SLC25A6 Antibody. The lane on the right is blocked with the synthesized peptide.



Western Blot analysis of various cells using ANT3 Polyclonal Antibody diluted at 1:2000



Western blot analysis of the lysates from K562 cells using SLC25A6 antibody.

Storage

-20°C for one year

501 Changsheng S Rd, Nanhu Dist, Jiaxing, Zhejiang, China

Tel: 86 21 31007137 | E-mail: save@bt-laboratory.com | www.bt-laboratory.com