

## AP3M2 Rabbit Polyclonal Antibody

### Description

Product type	Primary Antibody
Code	BT-AP00480
Host	Rabbit
Isotype	IgG
Size	100ul, 50ul, 20ul
Immunogen	Synthesized peptide derived from human AP3M2
Mol wt	45980
Species reactivity	Human, Mouse, Rat
Clonality	Polyclonal
Recommended application	WB
Concentration	1 mg/ml
Full name	AP3M2
Synonyms	AP3M2

This product is for research use only, not for use in human, therapeutic or diagnostic procedure.

### Background

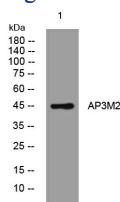
This gene encodes a subunit of the heterotetrameric adaptor-related protein complex 3 (AP-3), which belongs to the adaptor complexes medium subunits family. The AP-3 complex plays a role in protein trafficking to lysosomes and specialized organelles. Multiple alternatively spliced variants, encoding the same protein, have been identified.

### Recommended Dilution

WB: 1: 500 - 1: 2000

Not yet tested in other applications.

### Images



Western blot analysis of lysates from MCF-7 cells, primary antibody was diluted at 1:1000, 4°C overnight

### Storage

-20°C for 1 year

501 Changsheng S Rd, Nanhu Dist, Jiaxing, Zhejiang, China

Tel: 86 21 31007137 | E-mail: [save@bt-laboratory.com](mailto:save@bt-laboratory.com) | [www.bt-laboratory.com](http://www.bt-laboratory.com)