

## AP-1 Polyclonal Antibody

### Description

<b>Product type</b>	Primary Antibody
<b>Code</b>	BT-AP00487
<b>Host</b>	Rabbit
<b>Isotype</b>	IgG
<b>Size</b>	20ul, 50ul, 100ul
<b>Immunogen</b>	The antiserum was produced against synthesized peptide derived from human c-Jun. AA range:221-270
<b>Mol wt</b>	35676
<b>Species reactivity</b>	Human, Mouse, Rat
<b>Clonality</b>	Polyclonal
<b>Recommended application</b>	WB, IHC-p, ELISA
<b>Concentration</b>	1 mg/ml
<b>Full name</b>	AP-1 Antibody
<b>Synonyms</b>	JUN; Transcription factor AP-1; Activator protein 1; AP1; Proto-oncogene c-Jun; V-jun avian sarcoma virus 17 oncogene homolog; p39

This product is for research use only, not for use in human, therapeutic or diagnostic procedure.

### Background

JUN is the putative transforming gene of avian sarcoma virus 17. It encodes a protein (Jun proto-oncogene, AP-1 transcription factor subunit) which is highly similar to the viral protein, and which interacts directly with specific target DNA sequences to regulate gene expression. JUN is intronless and is mapped to 1p32-p31, a chromosomal region involved in both translocations and deletions in human malignancies.

### Recommended Dilution

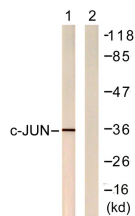
WB: 1: 500 - 1: 2000

IHC: 1: 100 - 1: 300

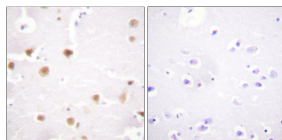
ELISA: 1: 20000

Not yet tested in other applications.

### Images



Western blot analysis of lysates from Jurkat cells, treated with UV 15', using c-Jun Antibody. The lane on the right is blocked with the synthesized peptide.



Immunohistochemistry analysis of paraffin-embedded human brain tissue, using c-Jun Antibody. The picture on the right is blocked with the synthesized peptide.

### Storage

-20°C for one year

501 Changsheng S Rd, Nanhu Dist, Jiaxing, Zhejiang, China

Tel: 86 21 31007137 | E-mail: [save@bt-laboratory.com](mailto:save@bt-laboratory.com) | [www.bt-laboratory.com](http://www.bt-laboratory.com)