

Apaf-1-ALT Polyclonal Antibody

Description

| | |
|--------------------------------|---|
| Product type | Primary Antibody |
| Code | BT-AP00502 |
| Host | Rabbit |
| Isotype | IgG |
| Size | 20ul, 50ul, 100ul |
| Immunogen | The antiserum was produced against synthesized peptide derived from human APAF-1-ALT. AA range:289-338 |
| Mol wt | 40500 |
| Species reactivity | Human |
| Clonality | Polyclonal |
| Recommended application | WB, IHC-p, IF, ELISA |
| Concentration | 1 mg/ml |
| Full name | Apaf-1-ALT Antibody |
| Synonyms | APAF1-interacting protein; APIP; APIP2; CGI-29 protein; MMRP19; dJ179L10.2; likely ortholog of mouse monocyte macrophage 19 |

This product is for research use only, not for use in human, therapeutic or diagnostic procedure.

Background

APAF1 encodes a cytoplasmic protein that initiates apoptosis. This protein (apoptotic peptidase activating factor 1) contains several copies of the WD-40 domain, a caspase recruitment domain (CARD), and an ATPase domain (NB-ARC). Upon binding cytochrome c and dATP, this protein forms an oligomeric apoptosome. The apoptosome binds and cleaves caspase 9 preproprotein, releasing its mature, activated form. Activated caspase 9 stimulates the subsequent caspase cascade that commits the cell to apoptosis. Alternative splicing results in several transcript variants encoding different isoforms.

Recommended Dilution

WB: 1: 500 - 1: 2000

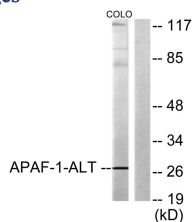
IHC: 1: 100 - 1: 300

IF: 1: 200 - 1: 1000

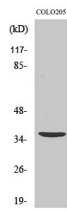
ELISA: 1: 10000

Not yet tested in other applications.

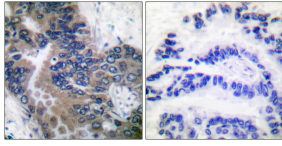
Images



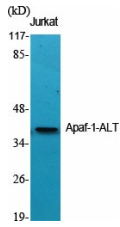
Western blot analysis of lysates from COLO205 cells, using APAF-1-ALT Antibody. The lane on the right is blocked with the synthesized peptide.



Western Blot analysis of COLO205 cells using Apaf-1-ALT Polyclonal Antibody diluted at 1:500



Immunohistochemistry analysis of paraffin-embedded human lung carcinoma tissue, using APAF-1-ALT Antibody. The picture on the right is blocked with the synthesized peptide.



Western Blot analysis of various cells using Apaf-1-ALT Polyclonal Antibody diluted at 1:500

Storage

-20°C for one year

501 Changsheng S Rd, Nanhu Dist, Jiaxing, Zhejiang, China

Tel: 86 21 31007137 | E-mail: save@bt-laboratory.com | www.bt-laboratory.com