

APC Polyclonal Antibody

Description

Product type	Primary Antibody
Code	BT-AP00507
Host	Rabbit
Isotype	IgG
Size	20ul, 50ul, 100ul
Immunogen	The antiserum was produced against synthesized peptide derived from human APC. AA range:2794-2843
Mol wt	311646
Species reactivity	Human, Mouse, Rat
Clonality	Polyclonal
Recommended application	WB, IHC-p, IF, ELISA
Concentration	1 mg/ml
Full name	APC Antibody
Synonyms	APC; DP2.5; Adenomatous polyposis coli protein; Protein APC; Deleted in polyposis 2.5

This product is for research use only, not for use in human, therapeutic or diagnostic procedure.

Background

APC encodes a tumor suppressor protein (APC, WNT signaling pathway regulator) that acts as an antagonist of the Wnt signaling pathway. It is also involved in other processes including cell migration and adhesion, transcriptional activation, and apoptosis. Defects in APC cause familial adenomatous polyposis (FAP), an autosomal dominant pre-malignant disease that usually progresses to malignancy. Disease-associated mutations tend to be clustered in a small region designated the mutation cluster region (MCR) and result in a truncated protein product.

Recommended Dilution

WB: 1: 500 - 1: 2000

IHC: 1: 100 - 1: 300

IF: 1: 200 - 1: 1000

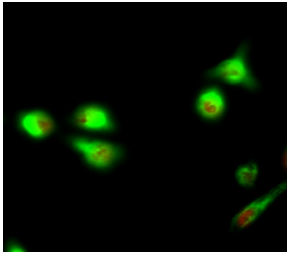
ELISA: 1: 40000

Not yet tested in other applications.

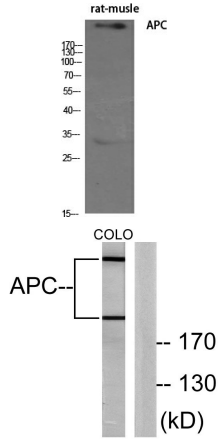
Images



Western Blot analysis of COLO205 cells using APC Polyclonal Antibody diluted at 1:500

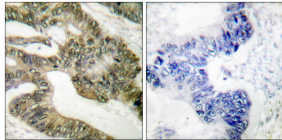


Immunofluorescence analysis of HeLa cell. 1, APC Polyclonal Antibody (red) was diluted at 1:200 (4° overnight). Galectin-3 Monoclonal Antibody (6G2) (green) was diluted at 1:200 (4° overnight). 2, Goat Anti Rabbit Alexa Fluor 594 was diluted at 1:1000 (room temperature, 50min). Goat Anti Mouse Alexa Fluor 488 was diluted at 1:1000 (room temperature, 50min).



Western Blot analysis of various cells using APC Polyclonal Antibody diluted at 1:500

Western blot analysis of lysates from COLO205 cells, using APC Antibody. The lane on the right is blocked with the synthesized peptide.



Immunohistochemistry analysis of paraffin-embedded human colon carcinoma tissue, using APC Antibody. The picture on the right is blocked with the synthesized peptide.

Storage

-20°C for one year

501 Changsheng S Rd, Nanhu Dist, Jiaxing, Zhejiang, China

Tel: 86 21 31007137 | E-mail: save@bt-laboratory.com | www.bt-laboratory.com