

APHC Polyclonal Antibody

Description

Product type	Primary Antibody
Code	BT-AP00514
Host	Rabbit
Isotype	IgG
Size	20ul, 50ul, 100ul
Immunogen	The antiserum was produced against synthesized peptide derived from human PHCA. AA range:171-220
Mol wt	31566
Species reactivity	Human, Mouse
Clonality	Polyclonal
Recommended application	WB, IHC-p, IF, ELISA
Concentration	1 mg/ml
Full name	APHC Antibody
Synonyms	ACER3; APHC; PHCA; Alkaline ceramidase 3; AlkCDase 3; Alkaline CDase 3; Alkaline dihydroceramidase SB89; Alkaline phytoceramidase; aPHC

This product is for research use only, not for use in human, therapeutic or diagnostic procedure.

Background

ACER3 (Alkaline Ceramidase 3) is a Protein Coding gene. Diseases associated with ACER3 include partial fetal alcohol syndrome and posterior amorphous corneal dystrophy. Among its related pathways are Metabolism and Sphingolipid metabolism. Hydrolyzes only phytoceramide into phytosphingosine and free fatty acid. Does not have reverse activity.

Recommended Dilution

WB: 1: 500 - 1: 2000

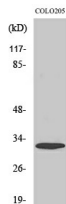
IHC: 1: 100 - 1: 300

IF: 1: 200 - 1: 1000

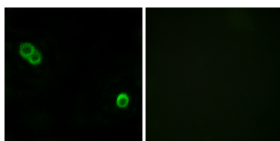
ELISA: 1: 40000

Not yet tested in other applications.

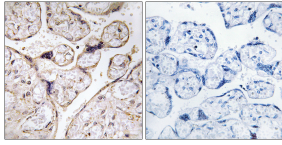
Images



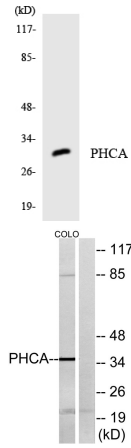
Western Blot analysis of various cells using APHC Polyclonal Antibody



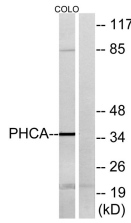
Immunofluorescence analysis of MCF7 cells, using PHCA Antibody. The picture on the right is blocked with the synthesized peptide.



Immunohistochemistry analysis of paraffin-embedded human placenta tissue, using PHCA Antibody. The picture on the right is blocked with the synthesized peptide.



Western blot analysis of the lysates from HT-29 cells using PHCA antibody.



Western blot analysis of lysates from COLO cells, using PHCA Antibody. The lane on the right is blocked with the synthesized peptide.

Storage

-20°C for one year

501 Changsheng S Rd, Nanhu Dist, Jiaxing, Zhejiang, China

Tel: 86 21 31007137 | E-mail: save@bt-laboratory.com | www.bt-laboratory.com