

ApoE Polyclonal Antibody

Description

Product type	Primary Antibody
Code	BT-AP00534
Host	Rabbit
Isotype	IgG
Size	20ul, 50ul, 100ul
Immunogen	The antiserum was produced against synthesized peptide derived from human ApoE. AA range:37-86
Mol wt	36154
Species reactivity	Human, Mouse, Rat
Clonality	Polyclonal
Recommended application	WB, IHC-p, ELISA
Concentration	1 mg/ml
Full name	ApoE Antibody
Synonyms	APOE; Apolipoprotein E; Apo-E

This product is for research use only, not for use in human, therapeutic or diagnostic procedure.

Background

The protein encoded by APOE is a major apoprotein of the chylomicron. It binds to a specific liver and peripheral cell receptor, and is essential for the normal catabolism of triglyceride-rich lipoprotein constituents. This gene maps to chromosome 19 in a cluster with the related apolipoprotein C1 and C2 genes. Mutations in this gene result in familial dysbetalipoproteinemia, or type III hyperlipoproteinemia (HLP III), in which increased plasma cholesterol and triglycerides are the consequence of impaired clearance of chylomicron and VLDL remnants.

Recommended Dilution

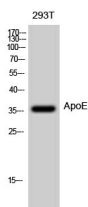
WB: 1: 500 - 1: 2000

IHC: 1: 100 - 1: 300

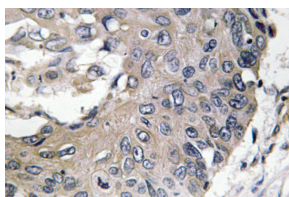
ELISA: 1: 10000

Not yet tested in other applications.

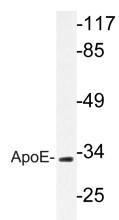
Images



Western Blot analysis of 293T cells using ApoE Polyclonal Antibody diluted at 1:500



Immunohistochemistry analysis of ApoE antibody in paraffin-embedded human lung carcinoma tissue.



Western blot analysis of lysate from RAW264.7 cells, using ApoE antibody.

Storage

-20°C for one year

501 Changsheng S Rd, Nanhu Dist, Jiaxing, Zhejiang, China

Tel: 86 21 31007137 | E-mail: save@bt-laboratory.com | www.bt-laboratory.com