

## ApoER2 Polyclonal Antibody

### Description

<b>Product type</b>	Primary Antibody
<b>Code</b>	BT-AP00535
<b>Host</b>	Rabbit
<b>Isotype</b>	IgG
<b>Size</b>	20ul, 50ul, 100ul
<b>Immunogen</b>	The antiserum was produced against synthesized peptide derived from human LRP8. AA range:451-500
<b>Mol wt</b>	105634
<b>Species reactivity</b>	Human
<b>Clonality</b>	Polyclonal
<b>Recommended application</b>	WB, ELISA
<b>Concentration</b>	1 mg/ml
<b>Full name</b>	ApoER2 Antibody
<b>Synonyms</b>	LRP8; APOER2; Low-density lipoprotein receptor-related protein 8; LRP-8; Apolipoprotein E receptor 2

This product is for research use only, not for use in human, therapeutic or diagnostic procedure.

### Background

Apolipoprotein B48 receptor is a macrophage receptor that binds to the apolipoprotein B48 of dietary triglyceride (TG)-rich lipoproteins. This receptor may provide essential lipids, lipid-soluble vitamins and other nutrients to reticuloendothelial cells. If overwhelmed with elevated plasma triglyceride, the apolipoprotein B48 receptor may contribute to foam cell formation, endothelial dysfunction, and atherothrombogenesis.

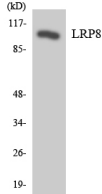
### Recommended Dilution

WB: 1: 500 - 1: 2000

ELISA: 1: 40000

Not yet tested in other applications.

### Images



Western blot analysis of the lysates from HeLa cells using LRP8 antibody.

### Storage

-20°C for one year