

ARL6 Rabbit Polyclonal Antibody

Description

| | |
|-------------------------|---|
| Product type | Primary Antibody |
| Code | BT-AP00537 |
| Host | Rabbit |
| Isotype | IgG |
| Size | 100ul, 50ul, 20ul |
| Immunogen | Synthesized peptide derived from human ARL6 |
| Mol wt | 20460 |
| Species reactivity | Human, Mouse |
| Clonality | Polyclonal |
| Recommended application | WB |
| Concentration | 1 mg/ml |
| Full name | ARL6 |
| Synonyms | ARL6 |

This product is for research use only, not for use in human, therapeutic or diagnostic procedure.

Background

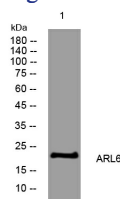
The protein encoded by this gene belongs to the ARF-like (ADP ribosylation factor-like) sub-family of the ARF family of GTP-binding proteins which are involved in regulation of intracellular traffic. Mutations in this gene are associated with Bardet-Biedl syndrome (BBS). A vision-specific transcript, encoding long isoform BBS3L, has been described (PMID: 20333246).

Recommended Dilution

WB: 1: 500 - 1: 2000

Not yet tested in other applications.

Images



Western blot analysis of lysates from MCF-7 cells, primary antibody was diluted at 1:1000, 4°C overnight

Storage

-20°C for 1 year

501 Changsheng S Rd, Nanhu Dist, Jiaxing, Zhejiang, China

Tel: 86 21 31007137 | E-mail: save@bt-laboratory.com | www.bt-laboratory.com