

ApoL2 Polyclonal Antibody

Description

Product type	Primary Antibody
Code	BT-AP00539
Host	Rabbit
Isotype	IgG
Size	20ul, 50ul, 100ul
Immunogen	The antiserum was produced against synthesized peptide derived from human APOL2. AA range:191-240
Mol wt	37092
Species reactivity	Human
Clonality	Polyclonal
Recommended application	WB, IHC-p, IF, ELISA
Concentration	1 mg/ml
Full name	ApoL2 Antibody
Synonyms	APOL2; Apolipoprotein L2; Apolipoprotein L-II; ApoL-II

This product is for research use only, not for use in human, therapeutic or diagnostic procedure.

Background

APOL2 is a member of the apolipoprotein L gene family. The encoded protein (apolipoprotein L2) is found in the cytoplasm, where it may affect the movement of lipids or allow the binding of lipids to organelles. Two transcript variants encoding the same protein have been found for APOL2.

Recommended Dilution

WB: 1: 500 - 1: 2000

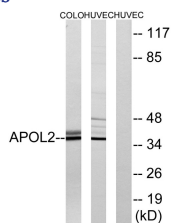
IHC: 1: 100 - 1: 300

IF: 1: 200 - 1: 1000

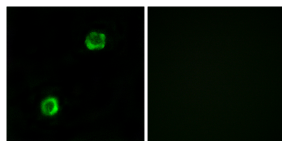
ELISA: 1: 40000

Not yet tested in other applications.

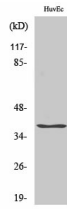
Images



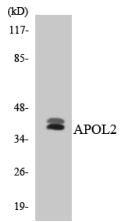
Western blot analysis of lysates from HUVEC and COLO cells, using APOL2 Antibody. The lane on the right is blocked with the synthesized peptide.



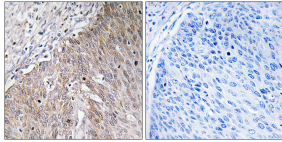
Immunofluorescence analysis of MCF7 cells, using APOL2 Antibody. The picture on the right is blocked with the synthesized peptide.



Western Blot analysis of various cells using ApoL2 Polyclonal Antibody



Western blot analysis of the lysates from HT-29 cells using APOL2 antibody.



Immunohistochemistry analysis of paraffin-embedded human cervix carcinoma tissue, using APOL2 Antibody. The picture on the right is blocked with the synthesized peptide.

Storage

-20°C for one year

501 Changsheng S Rd, Nanhu Dist, Jiaxing, Zhejiang, China

Tel: 86 21 31007137 | E-mail: save@bt-laboratory.com | www.bt-laboratory.com