

ApoL5 Polyclonal Antibody

Description

Product type	Primary Antibody
Code	BT-AP00542
Host	Rabbit
Isotype	IgG
Size	20ul, 50ul, 100ul
Immunogen	The antiserum was produced against synthesized peptide derived from human APOL5. AA range:384-433
Mol wt	47044
Species reactivity	Human
Clonality	Polyclonal
Recommended application	IHC-p, IF, ELISA
Concentration	1 mg/ml
Full name	ApoL5 Antibody
Synonyms	APOL5; Apolipoprotein L5; Apolipoprotein L-V; ApoL-V

This product is for research use only, not for use in human, therapeutic or diagnostic procedure.

Background

APOL5 (apolipoprotein L5) is a member of the apolipoprotein L gene family. The encoded protein is found in the cytoplasm, where it may affect the movement of lipids or allow the binding of lipids to organelles.

Recommended Dilution

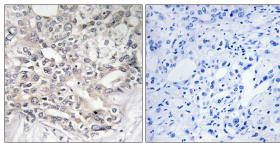
IHC: 1: 100 - 1: 300

IF: 1: 200 - 1: 1000

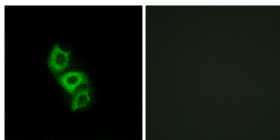
ELISA: 1: 40000

Not yet tested in other applications.

Images



Immunohistochemistry analysis of paraffin-embedded human liver carcinoma tissue, using APOL5 Antibody. The picture on the right is blocked with the synthesized peptide.



Immunofluorescence analysis of A549 cells, using APOL5 Antibody. The picture on the right is blocked with the synthesized peptide.

Storage

-20°C for one year