

ApoOL Polyclonal Antibody

Description

Product type	Primary Antibody
Code	BT-AP00544
Host	Rabbit
Isotype	IgG
Size	20ul, 50ul, 100ul
Immunogen	The antiserum was produced against synthesized peptide derived from human APOOL. AA range:219-268
Mol wt	29159
Species reactivity	Human, Mouse, Rat
Clonality	Polyclonal
Recommended application	WB, ELISA
Concentration	1 mg/ml
Full name	ApoOL Antibody
Synonyms	APOOL; CXorf33; FAM121A; Apolipoprotein O-like; Protein FAM121A

This product is for research use only, not for use in human, therapeutic or diagnostic procedure.

Background

APOOL encodes apolipoprotein O like which contains an apolipoprotein O superfamily domain. This domain is found on proteins in circulating lipoprotein complexes.

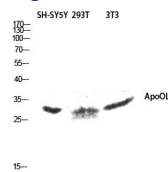
Recommended Dilution

WB: 1: 500 - 1: 2000

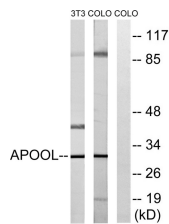
ELISA: 1: 40000

Not yet tested in other applications.

Images



Western blot analysis of SH-SY5Y 293T 3T3 lysis using ApoOL antibody. Antibody was diluted at 1:1000



Western blot analysis of lysates from COLO and NIH/3T3 cells, using APOOL Antibody. The lane on the right is blocked with the synthesized peptide.

Storage

-20°C for one year