

APS Polyclonal Antibody

Description

Product type	Primary Antibody
Code	BT-AP00549
Host	Rabbit
Isotype	IgG
Size	20ul, 50ul, 100ul
Immunogen	Synthesized peptide derived from the Internal region of human APS.
Mol wt	67728
Species reactivity	Human, Mouse, Rat
Clonality	Polyclonal
Recommended application	WB, ELISA
Concentration	1 mg/ml
Full name	APS Antibody
Synonyms	SH2B2; APS; SH2B adaptor protein 2; Adapter protein with pleckstrin homology and Src homology 2 domains; SH2 and PH domain-containing adapter protein APS

This product is for research use only, not for use in human, therapeutic or diagnostic procedure.

Background

The SH2B adaptor protein 2 encoded by SH2B2 is expressed in B lymphocytes and contains pleckstrin homology and src homology 2 (SH2) domains. In Burkitt's lymphoma cell lines, it is tyrosine-phosphorylated in response to B cell receptor stimulation. Because it binds Shc independent of stimulation and Grb2 after stimulation, it appears to play a role in signal transduction from the receptor to the Shc/Grb2 pathway.

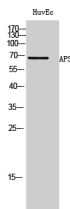
Recommended Dilution

WB: 1: 500 - 1: 2000

ELISA: 1: 20000

Not yet tested in other applications.

Images



Western Blot analysis of HuvEc cells using APS Polyclonal Antibody

Storage

-20°C for one year