

AQP1 Polyclonal Antibody

Description

Product type	Primary Antibody
Code	BT-AP00552
Host	Rabbit
Isotype	IgG
Size	20ul, 50ul, 100ul
Immunogen	The antiserum was produced against synthesized peptide derived from human AQP1. AA range:101-150
Mol wt	28526
Species reactivity	Human, Mouse, Rat
Clonality	Polyclonal
Recommended application	WB, ELISA
Concentration	1 mg/ml
Full name	AQP1 Antibody
Synonyms	AQP1; CHIP28; Aquaporin-1; AQP-1; Aquaporin-CHIP; Urine water channel; Water channel protein for red blood cells and kidney proximal tubule

This product is for research use only, not for use in human, therapeutic or diagnostic procedure.

Background

AQP1 encodes a small integral membrane protein with six bilayer spanning domains that functions as a water channel protein. This protein permits passive transport of water along an osmotic gradient. AQP1 is a possible candidate for disorders involving imbalance in ocular fluid movement.

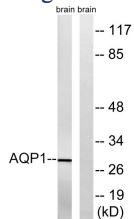
Recommended Dilution

WB: 1: 500 - 1: 2000

ELISA: 1: 40000

Not yet tested in other applications.

Images



Western blot analysis of lysates from rat brain cells, using AQP1 Antibody. The lane on the right is blocked with the synthesized peptide.

Storage

-20°C for one year