

## AQP12 Polyclonal Antibody

### Description

<b>Product type</b>	Primary Antibody
<b>Code</b>	BT-AP00555
<b>Host</b>	Rabbit
<b>Isotype</b>	IgG
<b>Size</b>	20ul, 50ul, 100ul
<b>Immunogen</b>	The antiserum was produced against synthesized peptide derived from human AQP12. AA range:231-280
<b>Mol wt</b>	31475
<b>Species reactivity</b>	Human
<b>Clonality</b>	Polyclonal
<b>Recommended application</b>	WB, ELISA
<b>Concentration</b>	1 mg/ml
<b>Full name</b>	AQP12 Antibody
<b>Synonyms</b>	AQP12A; AQP12; AQPX2; Aquaporin-12A; AQP-12; AQP12B; Aquaporin-12B; AQP-12B

**This product is for research use only, not for use in human, therapeutic or diagnostic procedure.**

### Background

Members of the aquaporin family are multiple pass transmembrane proteins that form homotetramers to facilitate the flow of water across the plasma membrane. At least thirteen aquaporins have been indentified to date (AQP0 through AQP12) and together this family of small, hydrophobic proteins plays a role in an array of biological processes that include urine formation, cell motility, fertilization, cell junction formation and regulation of overall water homeostasis.

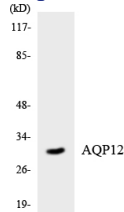
### Recommended Dilution

WB: 1: 500 - 1: 2000

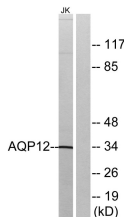
ELISA: 1: 40000

Not yet tested in other applications.

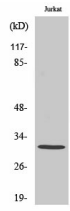
### Images



Western blot analysis of the lysates from HUVEC cells using AQP12 antibody.



Western blot analysis of lysates from Jurkat cells, using AQP12 Antibody. The lane on the right is blocked with the synthesized peptide.



Western Blot analysis of various cells using AQP12 Polyclonal Antibody diluted at 1:1000

### Storage

-20°C for one year

501 Changsheng S Rd, Nanhu Dist, Jiaxing, Zhejiang, China

Tel: 86 21 31007137 | E-mail: [save@bt-laboratory.com](mailto:save@bt-laboratory.com) | [www.bt-laboratory.com](http://www.bt-laboratory.com)