

## AQP4 Polyclonal Antibody

### Description

<b>Product type</b>	Primary Antibody
<b>Code</b>	BT-AP00558
<b>Host</b>	Rabbit
<b>Isotype</b>	IgG
<b>Size</b>	20ul, 50ul, 100ul
<b>Immunogen</b>	The antiserum was produced against synthesized peptide derived from human AQP4. AA range:204-253
<b>Mol wt</b>	34830
<b>Species reactivity</b>	Human, Mouse, Rat
<b>Clonality</b>	Polyclonal
<b>Recommended application</b>	WB, IHC-p, ELISA
<b>Concentration</b>	1 mg/ml
<b>Full name</b>	AQP4 Antibody
<b>Synonyms</b>	AQP4; Aquaporin-4; AQP-4; Mercurial-insensitive water channel; MIWC; WCH4

**This product is for research use only, not for use in human, therapeutic or diagnostic procedure.**

### Background

AQP4 encodes a member of the aquaporin family of intrinsic membrane proteins that function as water-selective channels in the plasma membranes of many cells. This protein (aquaporin 4) is the predominant aquaporin found in brain and has an important role in brain water homeostasis. Alternatively spliced transcript variants encoding different isoforms have been described for this gene. A recent study provided evidence for translational readthrough in this gene and expression of an additional C-terminally extended isoform via the use of an alternative in-frame translation termination codon.

### Recommended Dilution

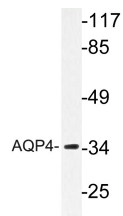
WB: 1: 500 - 1: 2000

IHC: 1: 100 - 1: 300

ELISA: 1: 5000

Not yet tested in other applications.

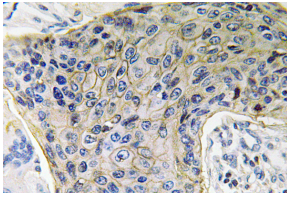
### Images



Western blot analysis of lysate from 293 cells, using AQP4 antibody.



Western Blot analysis of various cells using AQP4 Polyclonal Antibody



Immunohistochemistry analysis of AQP4 antibody in paraffin-embedded human lung carcinoma tissue.

#### Storage

-20°C for one year

501 Changsheng S Rd, Nanhu Dist, Jiaxing, Zhejiang, China

Tel: 86 21 31007137 | E-mail: [save@bt-laboratory.com](mailto:save@bt-laboratory.com) | [www.bt-laboratory.com](http://www.bt-laboratory.com)