

## AR Alpha2B Polyclonal Antibody

### Description

<b>Product type</b>	Primary Antibody
<b>Code</b>	BT-AP00571
<b>Host</b>	Rabbit
<b>Isotype</b>	IgG
<b>Size</b>	20ul, 50ul, 100ul
<b>Immunogen</b>	The antiserum was produced against synthesized peptide derived from human Adrenergic Receptor alpha-2B. AA range:161-210
<b>Mol wt</b>	49954
<b>Species reactivity</b>	Human
<b>Clonality</b>	Polyclonal
<b>Recommended application</b>	IF, ELISA
<b>Concentration</b>	1 mg/ml
<b>Full name</b>	AR alpha2B Antibody
<b>Synonyms</b>	ADRA2B; ADRA2L1; ADRA2RL1; Alpha-2B adrenergic receptor; Alpha-2 adrenergic receptor subtype C2; Alpha-2B adrenoreceptor; Alpha-2B adrenoceptor; Alpha-2BAR

This product is for research use only, not for use in human, therapeutic or diagnostic procedure.

### Background

ADRA2B encodes a seven-pass transmembrane protein. Alpha-2B adrenergic receptor is a member of a subfamily of G protein-coupled receptors that regulate neurotransmitter release from sympathetic nerves and from adrenergic neurons in the central nervous system.

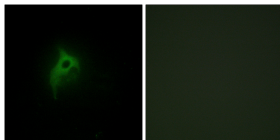
### Recommended Dilution

IF: 1: 200 - 1: 1000

ELISA: 1: 10000

Not yet tested in other applications.

### Images



Immunofluorescence analysis of HepG2 cells, using Adrenergic Receptor alpha-2B Antibody. The picture on the right is blocked with the synthesized peptide.

### Storage

-20°C for one year

501 Changsheng S Rd, Nanhu Dist, Jiaxing, Zhejiang, China

Tel: 86 21 31007137 | E-mail: [save@bt-laboratory.com](mailto:save@bt-laboratory.com) | [www.bt-laboratory.com](http://www.bt-laboratory.com)