

ARALAR Polyclonal Antibody

Description

Product type	Primary Antibody
Code	BT-AP00579
Host	Rabbit
Isotype	IgG
Size	20ul, 50ul, 100ul
Immunogen	The antiserum was produced against synthesized peptide derived from human CMC1. AA range:391-440
Mol wt	74756
Species reactivity	Human
Clonality	Polyclonal
Recommended application	WB, IHC-p, ELISA
Concentration	1 mg/ml
Full name	ARALAR Antibody
Synonyms	SLC25A12; ARALAR1; Calcium-binding mitochondrial carrier protein Aralar1; Mitochondrial aspartate glutamate carrier 1; Solute carrier family 25 member 12

This product is for research use only, not for use in human, therapeutic or diagnostic procedure.

Background

SLC25A12 encodes a calcium-binding mitochondrial carrier protein. The encoded protein (solute carrier family 25 member 12) localizes to the mitochondria and is involved in the exchange of aspartate for glutamate across the inner mitochondrial membrane. Polymorphisms in this gene may be associated with autism, and mutations in SLC25A12 may also be a cause of global cerebral hypomyelination. Alternatively spliced transcript variants have been observed for SLC25A12.

Recommended Dilution

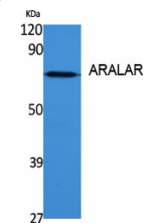
WB: 1: 500 - 1: 2000

IHC: 1: 100 - 1: 300

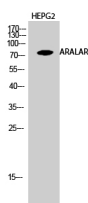
ELISA: 1: 20000

Not yet tested in other applications.

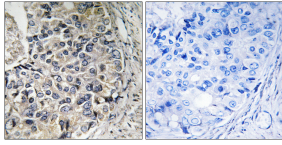
Images



Western Blot analysis of various cells using ARALAR Polyclonal Antibody diluted at 1:1000



Western Blot analysis of HEPG2 cells using ARALAR Polyclonal Antibody diluted at 1:1000



Immunohistochemistry analysis of paraffin-embedded human prostate carcinoma tissue, using CMC1 Antibody. The picture on the right is blocked with the synthesized peptide.

Storage

-20°C for one year

501 Changsheng S Rd, Nanhu Dist, Jiaxing, Zhejiang, China

Tel: 86 21 31007137 | E-mail: save@bt-laboratory.com | www.bt-laboratory.com