

ARHGAP1 Polyclonal Antibody

Description

Product type	Primary Antibody
Code	BT-AP00595
Host	Rabbit
Isotype	IgG
Size	20ul, 50ul, 100ul
Immunogen	The antiserum was produced against synthesized peptide derived from human RHG1. AA range:189-238
Mol wt	50436
Species reactivity	Human, Mouse
Clonality	Polyclonal
Recommended application	WB, IHC-p, ELISA
Concentration	1 mg/ml
Full name	ARHGAP1 Antibody
Synonyms	ARHGAP1; CDC42GAP; RHOGAP1; Rho GTPase-activating protein 1; CDC42 GTPase-activating protein; GTPase-activating protein rhoOGAP; Rho-related small GTPase protein activator; Rho-type GTPase-activating

This product is for research use only, not for use in human, therapeutic or diagnostic procedure.

Background

ARHGAP1 encodes a member of a large family of proteins that activate Rho-type guanosine triphosphate (GTP) metabolizing enzymes. The encoded protein contains a SRC homology 3 domain and interacts with Bcl-2-associated protein family members.

Recommended Dilution

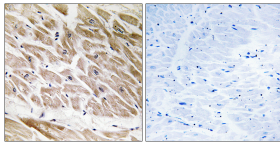
WB: 1: 500 - 1: 2000

IHC: 1: 100 - 1: 300

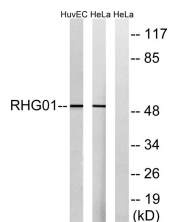
ELISA: 1: 10000

Not yet tested in other applications.

Images



Immunohistochemistry analysis of paraffin-embedded human heart tissue, using RHG1 Antibody. The picture on the right is blocked with the synthesized peptide.



Western blot analysis of lysates from HeLa and HUVEC cells, using RHG1 Antibody. The lane on the right is blocked with the synthesized peptide.

Storage

-20°C for one year

501 Changsheng S Rd, Nanhu Dist, Jiaxing, Zhejiang, China

Tel: 86 21 31007137 | E-mail: save@bt-laboratory.com | www.bt-laboratory.com