

## ARHGAP17 Polyclonal Antibody

### Description

<b>Product type</b>	Primary Antibody
<b>Code</b>	BT-AP00598
<b>Host</b>	Rabbit
<b>Isotype</b>	IgG
<b>Size</b>	20ul, 50ul, 100ul
<b>Immunogen</b>	The antiserum was produced against synthesized peptide derived from human RHG17. AA range:331-380
<b>Mol wt</b>	95437
<b>Species reactivity</b>	Human, Mouse, Rat
<b>Clonality</b>	Polyclonal
<b>Recommended application</b>	WB, ELISA
<b>Concentration</b>	1 mg/ml
<b>Full name</b>	ARHGAP17 Antibody
<b>Synonyms</b>	ARHGAP17; RICH1; MSTP066; MSTP110; Rho GTPase-activating protein 17; Rho-type GTPase-activating protein 17; RhoGAP interacting with CIP4 homologs protein 1; RICH-1

**This product is for research use only, not for use in human, therapeutic or diagnostic procedure.**

### Background

RICH1 is a GTPase-activating protein (GAP). GAPs stimulate the intrinsic GTP hydrolysis of small G proteins, such as RHOA (MIM 165390), RAC1 (MIM 602048), and CDC42 (MIM 116952).

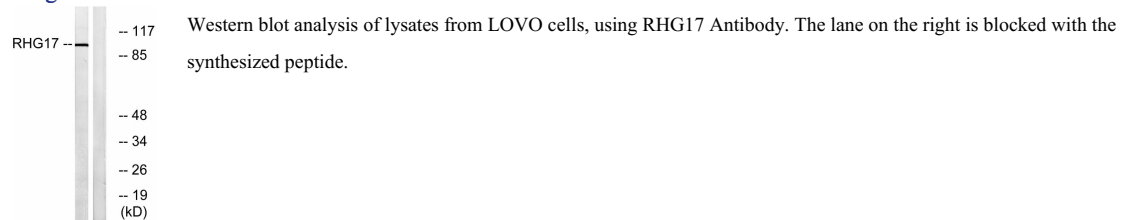
### Recommended Dilution

WB: 1: 500 - 1: 2000

ELISA: 1: 40000

Not yet tested in other applications.

### Images



### Storage

-20°C for one year