

## ARHGAP18 Polyclonal Antibody

### Description

<b>Product type</b>	Primary Antibody
<b>Code</b>	BT-AP00599
<b>Host</b>	Rabbit
<b>Isotype</b>	IgG
<b>Size</b>	20ul, 50ul, 100ul
<b>Immunogen</b>	The antiserum was produced against synthesized peptide derived from human RHG18. AA range:517-566
<b>Mol wt</b>	74947
<b>Species reactivity</b>	Human
<b>Clonality</b>	Polyclonal
<b>Recommended application</b>	WB, IHC-p, ELISA
<b>Concentration</b>	1 mg/ml
<b>Full name</b>	ARHGAP18 Antibody
<b>Synonyms</b>	ARHGAP18; Rho GTPase-activating protein 18; MacGAP; Rho-type GTPase-activating protein 18

**This product is for research use only, not for use in human, therapeutic or diagnostic procedure.**

### Background

ARHGAP18 belongs to a family of Rho (see MIM 165390) GTPase-activating proteins that modulate cell signaling (Potkin et al., 2009 [PubMed 19065146]).

### Recommended Dilution

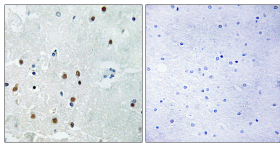
WB: 1: 500 - 1: 2000

IHC: 1: 100 - 1: 300

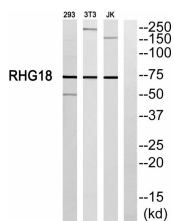
ELISA: 1: 40000

Not yet tested in other applications.

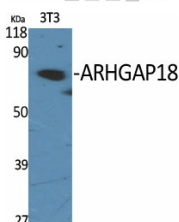
### Images



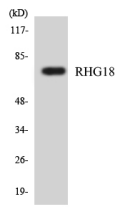
Immunohistochemistry analysis of paraffin-embedded human brain, using RHG18 Antibody. The lane on the right is blocked with the RHG18 peptide.



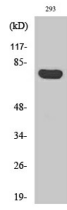
Western blot analysis of RHG18 Antibody. The lane on the right is blocked with the RHG18 peptide.



Western Blot analysis of various cells using ARHGAP18 Polyclonal Antibody



Western blot analysis of the lysates from HepG2 cells using RHG18 antibody.



Western Blot analysis of Jurkat cells using ARHGAP18 Polyclonal Antibody

### Storage

-20°C for one year

501 Changsheng S Rd, Nanhu Dist, Jiaxing, Zhejiang, China

Tel: 86 21 31007137 | E-mail: [save@bt-laboratory.com](mailto:save@bt-laboratory.com) | [www.bt-laboratory.com](http://www.bt-laboratory.com)