

ARHGEF19 Polyclonal Antibody

Description

Product type	Primary Antibody
Code	BT-AP00605
Host	Rabbit
Isotype	IgG
Size	20ul, 50ul, 100ul
Immunogen	The antiserum was produced against synthesized peptide derived from human ARHGEF19. AA range:251-300
Mol wt	89197
Species reactivity	Human
Clonality	Polyclonal
Recommended application	WB, IHC-p, ELISA
Concentration	1 mg/ml
Full name	ARHGEF19 Antibody
Synonyms	ARHGEF19; Rho guanine nucleotide exchange factor 19; Ephexin-2

This product is for research use only, not for use in human, therapeutic or diagnostic procedure.

Background

Guanine nucleotide exchange factors (GEFs) such as ARHGEF19 accelerate the GTPase activity of Rho GTPases (see RHOA, MIM 165390).

Recommended Dilution

WB: 1: 500 - 1: 2000

IHC: 1: 100 - 1: 300

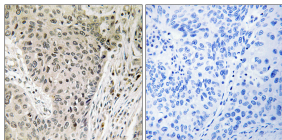
ELISA: 1: 20000

Not yet tested in other applications.

Images



Western Blot analysis of various cells using ARHGEF19 Polyclonal Antibody



Immunohistochemistry analysis of paraffin-embedded human lung carcinoma, using ARHGEF19 Antibody. The picture on the right is blocked with the synthesized peptide.

Storage

-20°C for one year