

ARHGEF9 Polyclonal Antibody

Description

Product type	Primary Antibody
Code	BT-AP00606
Host	Rabbit
Isotype	IgG
Size	20ul, 50ul, 100ul
Immunogen	The antiserum was produced against synthesized peptide derived from human ARHGEF9. AA range:399-448
Mol wt	60982
Species reactivity	Human, Mouse, Rat
Clonality	Polyclonal
Recommended application	IHC-p, ELISA
Concentration	1 mg/ml
Full name	ARHGEF9 Antibody
Synonyms	ARHGEF9; ARHGH9; KIAA0424; Rho guanine nucleotide exchange factor 9; Collybistin; PEM-2 homolog; Rac/Cdc42 guanine nucleotide exchange factor 9

This product is for research use only, not for use in human, therapeutic or diagnostic procedure.

Background

The Cdc42 guanine nucleotide exchange factor 9 encoded by ARHGEF9 is a Rho-like GTPase that switches between the active (GTP-bound) state and inactive (GDP-bound) state to regulate CDC42 and other genes. Defects in this gene are a cause of startle disease with epilepsy (STHEE), also known as hyperekplexia with epilepsy. Three transcript variants encoding different isoforms have been found for this gene.

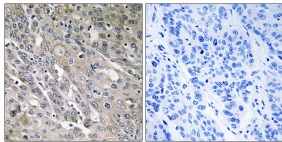
Recommended Dilution

IHC: 1: 100 - 1: 300

ELISA: 1: 40000

Not yet tested in other applications.

Images



Immunohistochemistry analysis of paraffin-embedded human lung carcinoma tissue, using ARHGEF9 Antibody. The picture on the right is blocked with the synthesized peptide.

Storage

-20°C for one year

501 Changsheng S Rd, Nanhu Dist, Jiaxing, Zhejiang, China

Tel: 86 21 31007137 | E-mail: save@bt-laboratory.com | www.bt-laboratory.com