

## ARMC6 Polyclonal Antibody

### Description

<b>Product type</b>	Primary Antibody
<b>Code</b>	BT-AP00616
<b>Host</b>	Rabbit
<b>Isotype</b>	IgG
<b>Size</b>	20ul, 50ul, 100ul
<b>Immunogen</b>	The antiserum was produced against synthesized peptide derived from human ARMC6. AA range:431-480
<b>Mol wt</b>	54142
<b>Species reactivity</b>	Human, Mouse, Rat
<b>Clonality</b>	Polyclonal
<b>Recommended application</b>	WB, IF, ELISA
<b>Concentration</b>	1 mg/ml
<b>Full name</b>	ARMC6 Antibody
<b>Synonyms</b>	ARMC6; Armadillo repeat-containing protein 6

This product is for research use only, not for use in human, therapeutic or diagnostic procedure.

### Background

The function of ARMC6's protein product has not been determined. A related protein in mouse suggests that this protein (armadillo repeat containing 6) has a conserved function. Two transcript variants encoding different isoforms have been found for ARMC6.

### Recommended Dilution

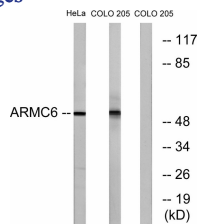
WB: 1: 500 - 1: 2000

IF: 1: 200 - 1: 1000

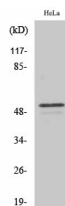
ELISA: 1: 40000

Not yet tested in other applications.

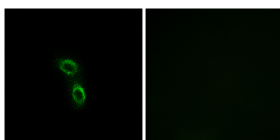
### Images



Western blot analysis of lysates from HeLa and COLO cells, using ARMC6 Antibody. The lane on the right is blocked with the synthesized peptide.



Western blot analysis of various cells using ARMC6 Polyclonal Antibody



Immunofluorescence analysis of A549 cells, using ARMC6 Antibody. The picture on the right is blocked with the synthesized peptide.

### Storage

-20°C for one year

501 Changsheng S Rd, Nanhu Dist, Jiaxing, Zhejiang, China

Tel: 86 21 31007137 | E-mail: [save@bt-laboratory.com](mailto:save@bt-laboratory.com) | [www.bt-laboratory.com](http://www.bt-laboratory.com)