

ARMCX1 Polyclonal Antibody

Description

Product type	Primary Antibody
Code	BT-AP00617
Host	Rabbit
Isotype	IgG
Size	20ul, 50ul, 100ul
Immunogen	The antiserum was produced against synthesized peptide derived from human ARMCX1. AA range: 1-50
Mol wt	49180
Species reactivity	Human
Clonality	Polyclonal
Recommended application	WB, IHC-p, IF, ELISA
Concentration	1 mg/ml
Full name	ARMCX1 Antibody
Synonyms	ARMCX1; ALEX1; AD032; Armadillo repeat-containing X-linked protein 1; ARM protein lost in epithelial cancers on chromosome X 1; Protein ALEX1

This product is for research use only, not for use in human, therapeutic or diagnostic procedure.

Background

ARMCX1 encodes a member of the ALEX family of proteins and may play a role in tumor suppression. The encoded protein (armadillo repeat containing, X-linked 1) contains a potential N-terminal transmembrane domain and two Armadillo (arm) repeats. Other proteins containing the arm repeat are involved in development, maintenance of tissue integrity, and tumorigenesis. ARMCX1 is closely localized with other family members, including ALEX2 and ALEX3, on the X chromosome.

Recommended Dilution

WB: 1: 500 - 1: 2000

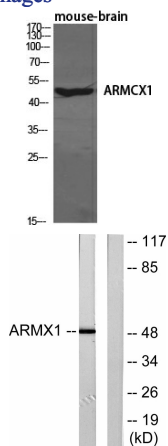
IHC: 1: 100 - 1: 300

IF: 1: 200 - 1: 1000

ELISA: 1: 20000

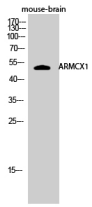
Not yet tested in other applications.

Images



Western Blot analysis of various cells using ARMCX1 Polyclonal Antibody diluted at 1:1000

Western blot analysis of lysates from rat brain cells, using ARMCX1 Antibody. The lane on the right is blocked with the synthesized peptide.



Western Blot analysis of mouse-brain cells using ARMCX1 Polyclonal Antibody diluted at 1:1000

Storage

-20°C for one year

501 Changsheng S Rd, Nanhu Dist, Jiaxing, Zhejiang, China

Tel: 86 21 31007137 | E-mail: save@bt-laboratory.com | www.bt-laboratory.com