

## ARMCX2 Polyclonal Antibody

### Description

<b>Product type</b>	Primary Antibody
<b>Code</b>	BT-AP00618
<b>Host</b>	Rabbit
<b>Isotype</b>	IgG
<b>Size</b>	20ul, 50ul, 100ul
<b>Immunogen</b>	The antiserum was produced against synthesized peptide derived from human ARMCX2. AA range:321-370
<b>Mol wt</b>	65683
<b>Species reactivity</b>	Human, Mouse, Rat
<b>Clonality</b>	Polyclonal
<b>Recommended application</b>	WB, IHC-p, IF, ELISA
<b>Concentration</b>	1 mg/ml
<b>Full name</b>	ARMCX2 Antibody
<b>Synonyms</b>	ARMCX2; ALEX2; KIAA0512; Armadillo repeat-containing X-linked protein 2; ARM protein lost in epithelial cancers on chromosome X 2; Protein ALEX2

**This product is for research use only, not for use in human, therapeutic or diagnostic procedure.**

### Background

ARMCX2 encodes a protein (armadillo repeat containing, X-linked 2) containing a potential N-terminal transmembrane domain and multiple armadillo (arm) repeats. Proteins containing arm repeats are involved in development, maintenance of tissue integrity, and tumorigenesis. ARMCX2 is located in a cluster of related genes on chromosome X. There is a pseudogene for ARMCX2 on chromosome 7. Alternative splicing in the 5' UTR results in multiple transcript variants encoding the same protein.

### Recommended Dilution

WB: 1: 500 - 1: 2000

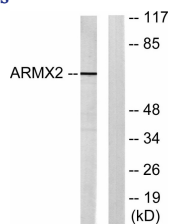
IHC: 1: 100 - 1: 300

IF: 1: 200 - 1: 1000

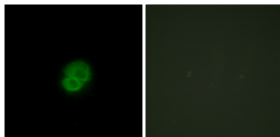
ELISA: 1: 20000

Not yet tested in other applications.

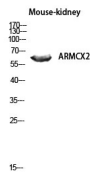
### Images



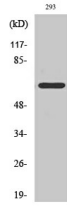
Western blot analysis of lysates from 293 cells, using ARMCX2 Antibody. The lane on the right is blocked with the synthesized peptide.



Immunofluorescence analysis of HepG2 cells, using ARMCX2 Antibody. The picture on the right is blocked with the synthesized peptide.



Western blot analysis of Mouse-kidney lysis using ARMCX2 antibody. Antibody was diluted at 1:1000



Western Blot analysis of various cells using ARMCX2 Polyclonal Antibody diluted at 1:1000

### Storage

-20°C for one year

501 Changsheng S Rd, Nanhu Dist, Jiaxing, Zhejiang, China

Tel: 86 21 31007137 | E-mail: [save@bt-laboratory.com](mailto:save@bt-laboratory.com) | [www.bt-laboratory.com](http://www.bt-laboratory.com)