

Arp3 Polyclonal Antibody

Description

Product type	Primary Antibody
Code	BT-AP00624
Host	Rabbit
Isotype	IgG
Size	20ul, 50ul, 100ul
Immunogen	The antiserum was produced against synthesized peptide derived from human ACTR3. AA range:369-418
Mol wt	47371
Species reactivity	Human, Mouse, Rat
Clonality	Polyclonal
Recommended application	WB, ELISA
Concentration	1 mg/ml
Full name	Arp3 Antibody
Synonyms	ACTR3; ARP3; Actin-related protein 3; Actin-like protein 3

This product is for research use only, not for use in human, therapeutic or diagnostic procedure.

Background

The specific function of ACTR3 has not yet been determined; however, the protein (ARP3 actin related protein 3 homolog) it encodes is known to be a major constituent of the ARP2/3 complex. This complex is located at the cell surface and is essential to cell shape and motility through lamellipodial actin assembly and protrusion. Three transcript variants encoding two different isoforms have been found for ACTR3.

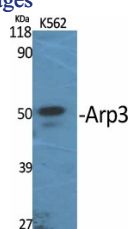
Recommended Dilution

WB: 1: 500 - 1: 2000

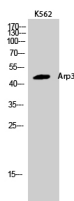
ELISA: 1: 40000

Not yet tested in other applications.

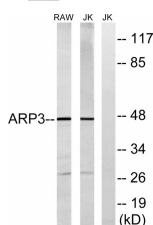
Images



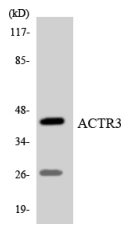
Western Blot analysis of various cells using Arp3 Polyclonal Antibody



Western Blot analysis of K562 cells using Arp3 Polyclonal Antibody



Western blot analysis of lysates from Jurkat and RAW264.7 cells, using ACTR3 Antibody. The lane on the right is blocked with the synthesized peptide.



Western blot analysis of the lysates from COLO205 cells using ACTR3 antibody.

Storage

-20°C for one year

501 Changsheng S Rd, Nanhu Dist, Jiaxing, Zhejiang, China

Tel: 86 21 31007137 | E-mail: save@bt-laboratory.com | www.bt-laboratory.com