

ARRDC2 Polyclonal Antibody

Description

Product type	Primary Antibody
Code	BT-AP00627
Host	Rabbit
Isotype	IgG
Size	20ul, 50ul, 100ul
Immunogen	The antiserum was produced against synthesized peptide derived from human ARRDC2. AA range:141-190
Mol wt	44379
Species reactivity	Human, Mouse
Clonality	Polyclonal
Recommended application	WB, IHC-p, ELISA
Concentration	1 mg/ml
Full name	ARRDC2 Antibody
Synonyms	ARRDC2; PP2703; Arrestin domain-containing protein 2

This product is for research use only, not for use in human, therapeutic or diagnostic procedure.

Background

ARRDC1, ARRDC2 (which exists as multiple alternatively spliced isoforms), ARRDC4 and ARRDC5 are arrestin domain-containing proteins that are encoded by genes which map to human chromosomes 9, 15 and 19. Chromosome 9, on which the ARRDC1 gene is localized, contains 145 million base pairs and comprises 4% of the human genome, encoding nearly 900 genes. Hereditary hemorrhagic telangiectasia, which is characterized by harmful vascular defects, and Familial dysautonomia, are both associated with chromosome 9. Notably, chromosome 9 encompasses the largest interferon family gene cluster. The ARRDC2 and ARRDC5 genes map to chromosome 19, which consists of over 63 million bases, houses approximately 1,400 genes and is recognized for having the greatest gene density of the human chromosomes. Unlike other ARRDC genes, the ARRDC4 gene maps to human chromosome 15, which houses over 700 genes and comprises nearly 3% of the human genome. Angelman syndrome, Prader-Willi syndrome, Tay-Sachs disease and Marfan syndrome are all associated with defects in chromosome 15-localized genes.

Recommended Dilution

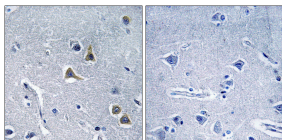
WB: 1: 500 - 1: 2000

IHC: 1: 100 - 1: 300

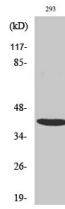
ELISA: 1: 40000

Not yet tested in other applications.

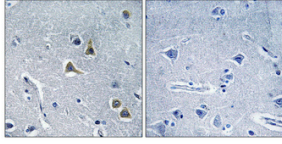
Images



Immunohistochemistry analysis of paraffin-embedded human brain tissue, using ARRDC2 Antibody. The picture on the right is blocked with the synthesized peptide.



Western Blot analysis of various cells using ARRDC2 Polyclonal Antibody



Immunohistochemical analysis of paraffin-embedded Human brain. Antibody was diluted at 1:100 (4° overnight). High-pressure and temperature Tris-EDTA, pH 8.0 was used for antigen retrieval. Negative control (right) obtained from antibody was pre-absorbed by immunogen peptide.

Storage

-20°C for one year

501 Changsheng S Rd, Nanhu Dist, Jiaxing, Zhejiang, China

Tel: 86 21 31007137 | E-mail: save@bt-laboratory.com | www.bt-laboratory.com