

ARRDC3 Polyclonal Antibody

Description

Product type	Primary Antibody
Code	BT-AP00628
Host	Rabbit
Isotype	IgG
Size	20ul, 50ul, 100ul
Immunogen	The antiserum was produced against synthesized peptide derived from human ARRDC3. AA range:365-414
Mol wt	46395
Species reactivity	Human, Mouse, Rat
Clonality	Polyclonal
Recommended application	WB, IHC-p, ELISA
Concentration	1 mg/ml
Full name	ARRDC3 Antibody
Synonyms	ARRDC3; KIAA1376; Arrestin domain-containing protein 3; TBP-2-like inducible membrane protein; TLIMP

This product is for research use only, not for use in human, therapeutic or diagnostic procedure.

Background

ARRDC3 (arrestin domain containing 3) encodes a member of the arrestin family of proteins, which regulate G protein-mediated signaling. The encoded protein is thought to act as a regulator of breast cancer growth and progression by binding to a phosphorylated form of integrin beta4, a tumor-related antigen, targeting the integrin for internalization and degradation.

Recommended Dilution

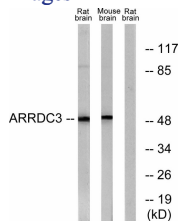
WB: 1: 500 - 1: 2000

IHC: 1: 100 - 1: 300

ELISA: 1: 20000

Not yet tested in other applications.

Images



Western blot analysis of lysates from rat brain and mouse brain cells, using ARRDC3 Antibody. The lane on the right is blocked with the synthesized peptide.

Storage

-20°C for one year