

## Artemis Polyclonal Antibody

### Description

|                         |   |
|-------------------------|---|
| Product type            | Primary Antibody  |
| Code                    | BT-AP00637  |
| Host                    | Rabbit  |
| Isotype                 | IgG   |
| Size                    | 20ul, 50ul, 100ul   |
| Immunogen               | The antiserum was produced against synthesized peptide derived from human Artemis. AA range:482-531   |
| Mol wt                  | 78436   |
| Species reactivity      | Human   |
| Clonality               | Polyclonal  |
| Recommended application | IHC-p, IF, ELISA  |
| Concentration           | 1 mg/ml   |
| Full name               | Artemis Antibody  |
| Synonyms                | DCLRE1C; ARTEMIS; ASCID; SCIDA; SNM1C; Protein artemis; DNA cross-link repair 1C protein; Protein A-SCID; SNM1 homolog C; hSNM1C; SNM1-like protein |

**This product is for research use only, not for use in human, therapeutic or diagnostic procedure.**

### Background

DCLRE1C encodes a nuclear protein that is involved in V(D)J recombination and DNA repair. The encoded protein has single-strand-specific 5'-3' exonuclease activity; it also exhibits endonuclease activity on 5' and 3' overhangs and hairpins. The protein also functions in the regulation of the cell cycle in response to DNA damage. Mutations in DCLRE1C can cause Athabaskan-type severe combined immunodeficiency (SCIDA) and Omenn syndrome. Alternative splicing results in multiple transcript variants.

### Recommended Dilution

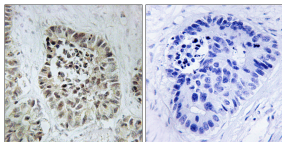
IHC: 1: 100 - 1: 300

IF: 1: 200 - 1: 1000

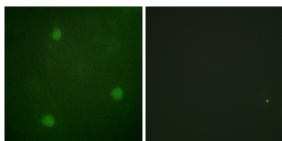
ELISA: 1: 10000

Not yet tested in other applications.

### Images



Immunohistochemistry analysis of paraffin-embedded human lung carcinoma tissue, using Artemis Antibody. The picture on the right is blocked with the synthesized peptide.



Immunofluorescence analysis of NIH/3T3 cells, using Artemis Antibody. The picture on the right is blocked with the synthesized peptide.

### Storage

-20°C for one year