

ARX Polyclonal Antibody

Description

Product type	Primary Antibody
Code	BT-AP00639
Host	Rabbit
Isotype	IgG
Size	20ul, 50ul, 100ul
Immunogen	Synthesized peptide derived from ARX . at AA range: 250-330
Mol wt	58160
Species reactivity	Human, Mouse, Rat
Clonality	Polyclonal
Recommended application	WB, ELISA
Concentration	1 mg/ml
Full name	ARX Antibody
Synonyms	ARX; Homeobox protein ARX; Aristaless-related homeobox

This product is for research use only, not for use in human, therapeutic or diagnostic procedure.

Background

ARX is a homeobox-containing gene expressed during development. Homeobox protein ARX contains two conserved domains, a C-peptide (or aristaless domain) and the prd-like class homeobox domain. It is a member of the group-II aristaless-related protein family whose members are expressed primarily in the central and/or peripheral nervous system. This gene is thought to be involved in CNS development. Expansion of a polyalanine tract and other mutations in this gene cause X-linked mental retardation and epilepsy.

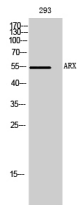
Recommended Dilution

WB: 1: 500 - 1: 2000

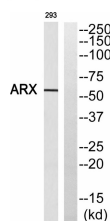
ELISA: 1: 5000

Not yet tested in other applications.

Images



Western Blot analysis of 293 cells using ARX Polyclonal Antibody cells nucleus.



Western blot analysis of ARX Antibody. The lane on the right is blocked with the ARX peptide.

Storage

-20°C for one year

501 Changsheng S Rd, Nanhu Dist, Jiaxing, Zhejiang, China

Tel: 86 21 31007137 | E-mail: save@bt-laboratory.com | www.bt-laboratory.com