

Arylsulfatase A Polyclonal Antibody

Description

Product type	Primary Antibody
Code	BT-AP00640
Host	Rabbit
Isotype	IgG
Size	20ul, 50ul, 100ul
Immunogen	The antiserum was produced against synthesized peptide derived from human ARSA. AA range:251-300
Mol wt	53588
Species reactivity	Human, Mouse, Rat
Clonality	Polyclonal
Recommended application	WB, IHC-p, ELISA
Concentration	1 mg/ml
Full name	Arylsulfatase A Antibody
Synonyms	ARSA; Arylsulfatase A; ASA; Cerebroside-sulfatase

This product is for research use only, not for use in human, therapeutic or diagnostic procedure.

Background

The protein encoded by ARSA hydrolyzes cerebroside sulfate to cerebroside and sulfate. Defects in this gene lead to metachromatic leucodystrophy (MLD), a progressive demyelination disease which results in a variety of neurological symptoms and ultimately death. Alternatively spliced transcript variants have been described for this gene.

Recommended Dilution

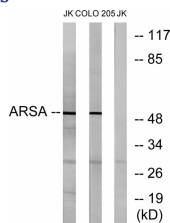
WB: 1: 500 - 1: 2000

IHC: 1: 100 - 1: 300

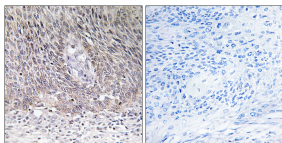
ELISA: 1: 20000

Not yet tested in other applications.

Images



Western blot analysis of lysates from Jurkat and COLO cells, using ARSA Antibody. The lane on the right is blocked with the synthesized peptide.



Immunohistochemistry analysis of paraffin-embedded human cervix carcinoma tissue, using ARSA Antibody. The picture on the right is blocked with the synthesized peptide.

Storage

-20°C for one year