

## Arylsulfatase D Polyclonal Antibody

### Description

<b>Product type</b>	Primary Antibody
<b>Code</b>	BT-AP00641
<b>Host</b>	Rabbit
<b>Isotype</b>	IgG
<b>Size</b>	20ul, 50ul, 100ul
<b>Immunogen</b>	The antiserum was produced against synthesized peptide derived from human ARSD. AA range:331-380
<b>Mol wt</b>	65071
<b>Species reactivity</b>	Human
<b>Clonality</b>	Polyclonal
<b>Recommended application</b>	IHC-p, IF, ELISA
<b>Concentration</b>	1 mg/ml
<b>Full name</b>	Arylsulfatase D Antibody
<b>Synonyms</b>	ARSD; Arylsulfatase D; ASD

This product is for research use only, not for use in human, therapeutic or diagnostic procedure.

### Background

The protein encoded by ARSD is a member of the sulfatase family. Sulfatases are essential for the correct composition of bone and cartilage matrix. The encoded protein is posttranslationally glycosylated and localized to the lysosome. ARSD is located within a cluster of similar arylsulfatase genes on chromosome X. A related pseudogene has been identified in the pseudoautosomal region of chromosome Y.

### Recommended Dilution

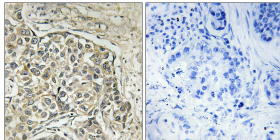
IHC: 1: 100 - 1: 300

IF: 1: 200 - 1: 1000

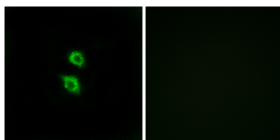
ELISA: 1: 20000

Not yet tested in other applications.

### Images



Immunohistochemistry analysis of paraffin-embedded human lung carcinoma tissue, using ARSD Antibody. The picture on the right is blocked with the synthesized peptide.



Immunofluorescence analysis of MCF7 cells, using ARSD Antibody. The picture on the right is blocked with the synthesized peptide.

### Storage

-20°C for one year