

Arylsulfatase F Polyclonal Antibody

Description

Product type	Primary Antibody
Code	BT-AP00643
Host	Rabbit
Isotype	IgG
Size	20ul, 50ul, 100ul
Immunogen	The antiserum was produced against synthesized peptide derived from human ARSF. AA range:301-350
Mol wt	65966
Species reactivity	Human, Monkey
Clonality	Polyclonal
Recommended application	WB, IHC-p, ELISA
Concentration	1 mg/ml
Full name	Arylsulfatase F Antibody
Synonyms	ARSF; Arylsulfatase F; ASF

This product is for research use only, not for use in human, therapeutic or diagnostic procedure.

Background

ARSF is a member of the sulfatase family, and more specifically, the arylsulfatase subfamily. Members of the subfamily share similarity in sequence and splice sites, and are clustered together on chromosome X, suggesting that they are derived from recent gene duplication events. Sulfatases are essential for the correct composition of bone and cartilage matrix. The activity of this protein, unlike that of arylsulfatase E, is not inhibited by warfarin. Multiple alternatively spliced variants, encoding the same protein, have been identified.

Recommended Dilution

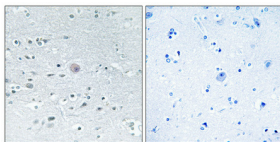
WB: 1: 500 - 1: 2000

IHC: 1: 100 - 1: 300

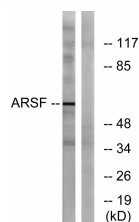
ELISA: 1: 40000

Not yet tested in other applications.

Images



Immunohistochemical analysis of paraffin-embedded Human brain. Antibody was diluted at 1:100(4° overnight). High-pressure and temperature Tris-EDTA,pH8.0 was used for antigen retrieval. Negative contrl (right) obtained from antibody was pre-absorbed by immunogen peptide.



Western blot analysis of lysates from COS7 cells, using ARSF Antibody. The lane on the right is blocked with the synthesized peptide.

Storage

-20°C for one year

501 Changsheng S Rd, Nanhu Dist, Jiaxing, Zhejiang, China

Tel: 86 21 31007137 | E-mail: save@bt-laboratory.com | www.bt-laboratory.com