

Arylsulfatase G Polyclonal Antibody

Description

Product type	Primary Antibody
Code	BT-AP00644
Host	Rabbit
Isotype	IgG
Size	20ul, 50ul, 100ul
Immunogen	The antiserum was produced against synthesized peptide derived from human ARSG. AA range:251-300
Mol wt	57061
Species reactivity	Human, Mouse, Rat
Clonality	Polyclonal
Recommended application	WB, IHC-p, ELISA
Concentration	1 mg/ml
Full name	Arylsulfatase G Antibody
Synonyms	ARSG; KIAA1001; Arylsulfatase G; ASG

This product is for research use only, not for use in human, therapeutic or diagnostic procedure.

Background

The arylsulfatase G encoded by ARSG belongs to the sulfatase enzyme family. Sulfatases hydrolyze sulfate esters from sulfated steroids, carbohydrates, proteoglycans, and glycolipids. They are involved in hormone biosynthesis, modulation of cell signaling, and degradation of macromolecules. This protein displays arylsulfatase activity at acidic pH, as is typical of lysosomal sulfatases, and has been shown to localize in the lysosomes. Alternatively spliced transcript variants have been found for this gene.

Recommended Dilution

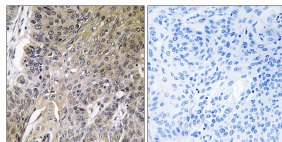
WB: 1: 500 - 1: 2000

IHC: 1: 100 - 1: 300

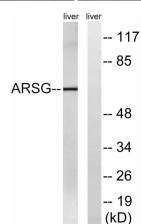
ELISA: 1: 40000

Not yet tested in other applications.

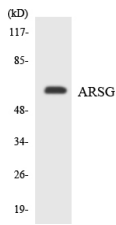
Images



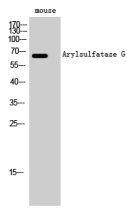
Immunohistochemistry analysis of paraffin-embedded human lung carcinoma tissue, using ARSG Antibody. The picture on the right is blocked with the synthesized peptide.



Western blot analysis of lysates from mouse liver, using ARSG Antibody. The lane on the right is blocked with the synthesized peptide.



Western blot analysis of the lysates from HeLa cells using ARSG antibody.



Western Blot analysis of mouse cells using Arylsulfatase G Polyclonal Antibody

Storage

-20°C for one year

501 Changsheng S Rd, Nanhu Dist, Jiaxing, Zhejiang, China

Tel: 86 21 31007137 | E-mail: save@bt-laboratory.com | www.bt-laboratory.com