

## Arylsulfatase K Polyclonal Antibody

### Description

Product type	Primary Antibody
Code	BT-AP00646
Host	Rabbit
Isotype	IgG
Size	20ul, 50ul, 100ul
Immunogen	The antiserum was produced against synthesized peptide derived from human ARSK. AA range:481-530
Mol wt	61450
Species reactivity	Human, Mouse, Rat
Clonality	Polyclonal
Recommended application	WB, IHC-p, ELISA
Concentration	1 mg/ml
Full name	Arylsulfatase K Antibody
Synonyms	ARSK; TSULF; Arylsulfatase K; ASK; Telethon sulfatase

This product is for research use only, not for use in human, therapeutic or diagnostic procedure.

### Background

Sulfatases (EC 3. . ), such as ARSK, hydrolyze sulfate esters from sulfated steroids, carbohydrates, proteoglycans, and glycolipids. They are involved in hormone biosynthesis, modulation of cell signaling, and degradation of macromolecules (Sardiello et al. 2005 [PubMed 16174644]).

### Recommended Dilution

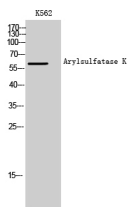
WB: 1: 500 - 1: 2000

IHC: 1: 100 - 1: 300

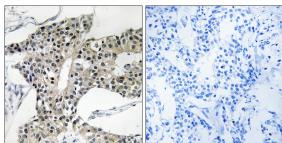
ELISA: 1: 20000

Not yet tested in other applications.

### Images



Western Blot analysis of K562 cells using Arylsulfatase K Polyclonal Antibody



Immunohistochemistry analysis of paraffin-embedded human breast carcinoma tissue, using ARSK Antibody. The picture on the right is blocked with the synthesized peptide.

### Storage

-20°C for one year