

AR- Alpha1A Polyclonal Antibody

Description

Product type	Primary Antibody
Code	BT-AP00648
Host	Rabbit
Isotype	IgG
Size	20ul, 50ul, 100ul
Immunogen	The antiserum was produced against synthesized peptide derived from human ADRA1A. AA range:136-185
Mol wt	51487
Species reactivity	Human, Mouse, Rat
Clonality	Polyclonal
Recommended application	WB, IF, ELISA
Concentration	1 mg/ml
Full name	AR-alpha1A Antibody
Synonyms	ADRA1A; ADRA1C; Alpha-1A adrenergic receptor; Alpha-1A adrenoreceptor; Alpha-1A adrenoceptor; Alpha-1C adrenergic receptor; Alpha-adrenergic receptor 1c

This product is for research use only, not for use in human, therapeutic or diagnostic procedure.

Background

Alpha-1-adrenergic receptors (alpha-1-ARs) are members of the G protein-coupled receptor superfamily. They activate mitogenic responses and regulate growth and proliferation of many cells. There are 3 alpha-1-AR subtypes: alpha-1A, -1B and -1D, all of which signal through the Gq/11 family of G-proteins and different subtypes show different patterns of activation. ADRA1A encodes alpha-1A-adrenergic receptor. Alternative splicing of this gene generates four transcript variants, which encode four different isoforms with distinct C-termini but having similar ligand binding properties.

Recommended Dilution

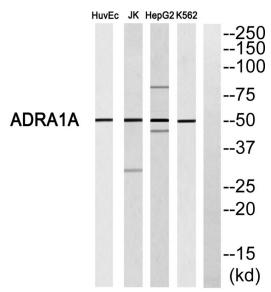
WB: 1: 500 - 1: 2000

IF: 1: 200 - 1: 1000

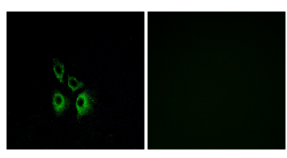
ELISA: 1: 10000

Not yet tested in other applications.

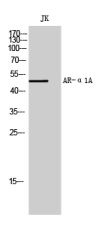
Images



Western blot analysis of ADRA1A Antibody. The lane on the right is blocked with the ADRA1A peptide.



Immunofluorescence analysis of A549 cells, using ADRA1A Antibody. The picture on the right is blocked with the synthesized peptide.



Western Blot analysis of JK cells using AR-α1A Polyclonal Antibody

Storage

-20°C for one year

501 Changsheng S Rd, Nanhu Dist, Jiaxing, Zhejiang, China
 Tel: 86 21 31007137 | E-mail: save@bt-laboratory.com | www.bt-laboratory.com