

AR- Alpha1D Polyclonal Antibody

Description

Product type	Primary Antibody
Code	BT-AP00650
Host	Rabbit
Isotype	IgG
Size	20ul, 50ul, 100ul
Immunogen	The antiserum was produced against synthesized peptide derived from human ADRA1D. AA range:451-500
Mol wt	60463
Species reactivity	Human
Clonality	Polyclonal
Recommended application	IHC-p, IF, ELISA
Concentration	1 mg/ml
Full name	AR-alpha1D Antibody
Synonyms	ADRA1D; ADRA1A; Alpha-1D adrenergic receptor; Alpha-1A adrenergic receptor; Alpha-1D adrenoceptor; Alpha-1D adrenoceptor; Alpha-adrenergic receptor 1a

This product is for research use only, not for use in human, therapeutic or diagnostic procedure.

Background

Alpha-1-adrenergic receptors (alpha-1-ARs) are members of the G protein-coupled receptor superfamily. They activate mitogenic responses and regulate growth and proliferation of many cells. There are 3 alpha-1-AR subtypes: alpha-1A, -1B and -1D, all of which signal through the Gq/11 family of G-proteins and different subtypes show different patterns of activation. ADRA1D encodes alpha-1D-adrenergic receptor. Similar to alpha-1B-adrenergic receptor gene, ADRA1D comprises 2 exons and a single intron that interrupts the coding region.

Recommended Dilution

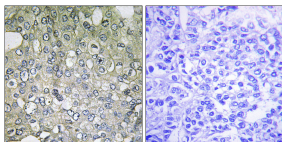
IHC: 1: 100 - 1: 300

IF: 1: 200 - 1: 1000

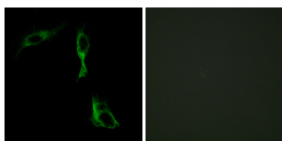
ELISA: 1: 20000

Not yet tested in other applications.

Images



Immunohistochemistry analysis of paraffin-embedded human breast carcinoma tissue, using ADRA1D Antibody. The picture on the right is blocked with the synthesized peptide.



Immunofluorescence analysis of HeLa cells, using ADRA1D Antibody. The picture on the right is blocked with the synthesized peptide.

Storage

-20°C for one year

501 Changsheng S Rd, Nanhu Dist, Jiaxing, Zhejiang, China

Tel: 86 21 31007137 | E-mail: save@bt-laboratory.com | www.bt-laboratory.com