

## AR-Beta2 Polyclonal Antibody

### Description

<b>Product type</b>	Primary Antibody
<b>Code</b>	BT-AP00654
<b>Host</b>	Rabbit
<b>Isotype</b>	IgG
<b>Size</b>	20ul, 50ul, 100ul
<b>Immunogen</b>	The antiserum was produced against synthesized peptide derived from human Adrenergic Receptor beta2. AA range:321-370
<b>Mol wt</b>	46557
<b>Species reactivity</b>	Human
<b>Clonality</b>	Polyclonal
<b>Recommended application</b>	WB, IHC-p, IF, FCM, ELISA
<b>Concentration</b>	1 mg/ml
<b>Full name</b>	AR-beta2 Antibody
<b>Synonyms</b>	ADRB2; ADRB2R; B2AR; Beta-2 adrenergic receptor; Beta-2 adrenoreceptor; Beta-2 adrenoceptor

**This product is for research use only, not for use in human, therapeutic or diagnostic procedure.**

### Background

ADRB2 encodes beta-2-adrenergic receptor which is a member of the G protein-coupled receptor superfamily. This receptor is directly associated with one of its ultimate effectors, the class C L-type calcium channel Ca (V)1.2. This receptor-channel complex also contains a G protein, an adenylyl cyclase, cAMP-dependent kinase, and the counterbalancing phosphatase, PP2A. The assembly of the signaling complex provides a mechanism that ensures specific and rapid signaling by this G protein-coupled receptor. ADRB2 is intronless. Different polymorphic forms, point mutations, and/or downregulation of this gene are associated with nocturnal asthma, obesity and type 2 diabetes.

### Recommended Dilution

WB: 1: 500 - 1: 2000

IHC: 1: 100 - 1: 300

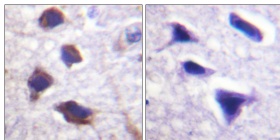
IF: 1: 200 - 1: 1000

FCM: 1: 200 - 1: 400

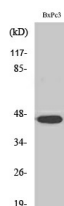
ELISA: 1: 5000

Not yet tested in other applications.

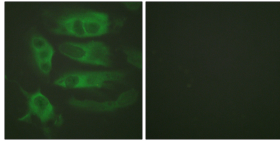
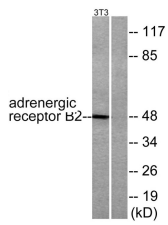
### Images



Immunohistochemistry analysis of paraffin-embedded human brain tissue, using Adrenergic Receptor beta2 Antibody. The picture on the right is blocked with the synthesized peptide.



Western Blot analysis of various cells using AR-β2 Polyclonal Antibody



### Storage

-20°C for one year

501 Changsheng S Rd, Nanhu Dist, Jiaxing, Zhejiang, China

Tel: 86 21 31007137 | E-mail: [save@bt-laboratory.com](mailto:save@bt-laboratory.com) | [www.bt-laboratory.com](http://www.bt-laboratory.com)