

## AR-Beta3 Polyclonal Antibody

### Description

<b>Product type</b>	Primary Antibody
<b>Code</b>	BT-AP00657
<b>Host</b>	Rabbit
<b>Isotype</b>	IgG
<b>Size</b>	20ul, 50ul, 100ul
<b>Immunogen</b>	The antiserum was produced against synthesized peptide derived from human ADRB3. AA range:250-299
<b>Mol wt</b>	43519
<b>Species reactivity</b>	Human, Mouse, Rat
<b>Clonality</b>	Polyclonal
<b>Recommended application</b>	WB, ELISA
<b>Concentration</b>	1 mg/ml
<b>Full name</b>	AR-beta3 Antibody
<b>Synonyms</b>	ADRB3; ADRB3R; B3AR; Beta-3 adrenergic receptor; Beta-3 adrenoreceptor; Beta-3 adrenoceptor

**This product is for research use only, not for use in human, therapeutic or diagnostic procedure.**

### Background

Beta-3 adrenergic receptor encoded by ADRB3 belongs to the family of beta adrenergic receptors, which mediate catecholamine-induced activation of adenylate cyclase through the action of G proteins. This receptor is located mainly in the adipose tissue and is involved in the regulation of lipolysis and thermogenesis.

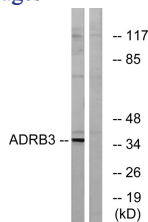
### Recommended Dilution

WB: 1: 500 - 1: 2000

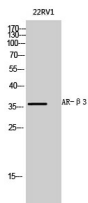
ELISA: 1: 20000

Not yet tested in other applications.

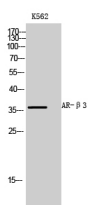
### Images



Western blot analysis of lysates from K562 cells, using ADRB3 Antibody. The lane on the right is blocked with the synthesized peptide.



Western Blot analysis of 22RV1 cells using AR-β3 Polyclonal Antibody diluted at 1:1000



Western Blot analysis of K562 cells using AR-β3 Polyclonal Antibody diluted at 1:1000

## Storage

-20°C for one year

501 Changsheng S Rd, Nanhu Dist, Jiaxing, Zhejiang, China

Tel: 86 21 31007137 | E-mail: [save@bt-laboratory.com](mailto:save@bt-laboratory.com) | [www.bt-laboratory.com](http://www.bt-laboratory.com)