

## AS250 Polyclonal Antibody

### Description

<b>Product type</b>	Primary Antibody
<b>Code</b>	BT-AP00658
<b>Host</b>	Rabbit
<b>Isotype</b>	IgG
<b>Size</b>	20ul, 50ul, 100ul
<b>Immunogen</b>	The antiserum was produced against synthesized peptide derived from human AS250. AA range:641-690
<b>Mol wt</b>	210770
<b>Species reactivity</b>	Human, Mouse
<b>Clonality</b>	Polyclonal
<b>Recommended application</b>	WB, IHC-p, IF, ELISA
<b>Concentration</b>	1 mg/ml
<b>Full name</b>	AS250 Antibody
<b>Synonyms</b>	RALGAPA2; C20orf74; KIAA1272; Ral GTPase-activating protein subunit alpha-2; 250 kDa substrate of Akt; AS250; p220

This product is for research use only, not for use in human, therapeutic or diagnostic procedure.

### Background

RALGAPA2 (Ral GTPase Activating Protein Catalytic Alpha Subunit 2) is a Protein Coding gene. Among its related pathways are Vesicle-mediated transport and Translocation of GLUT4 to the plasma membrane. GO annotations related to this gene include protein heterodimerization activity and GTPase activator activity. An important paralog of this gene is RAPIGAP.

### Recommended Dilution

WB: 1: 500 - 1: 2000

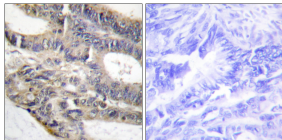
IHC: 1: 100 - 1: 300

IF: 1: 200 - 1: 1000

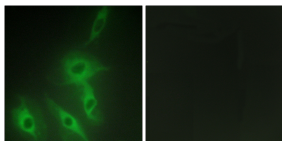
ELISA: 1: 10000

Not yet tested in other applications.

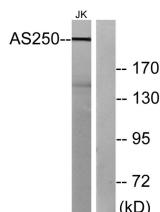
### Images



Immunohistochemistry analysis of paraffin-embedded human colon carcinoma tissue, using AS250 Antibody. The picture on the right is blocked with the synthesized peptide.



Immunofluorescence analysis of HeLa cells, using AS250 Antibody. The picture on the right is blocked with the synthesized peptide.



Western blot analysis of lysates from Jurkat cells, using AS250 Antibody. The lane on the right is blocked with the synthesized peptide.

## Storage

-20°C for one year

501 Changsheng S Rd, Nanhu Dist, Jiaxing, Zhejiang, China

Tel: 86 21 31007137 | E-mail: [save@bt-laboratory.com](mailto:save@bt-laboratory.com) | [www.bt-laboratory.com](http://www.bt-laboratory.com)