

ASF1B Polyclonal Antibody

Description

Product type	Primary Antibody
Code	BT-AP00667
Host	Rabbit
Isotype	IgG
Size	20ul, 50ul, 100ul
Immunogen	The antiserum was produced against synthesized peptide derived from human ASF1B. AA range:101-150
Mol wt	22434
Species reactivity	Human, Mouse, Rat
Clonality	Polyclonal
Recommended application	WB, IHC-p, ELISA
Concentration	1 mg/ml
Full name	ASF1B Antibody
Synonyms	ASF1B; Histone chaperone ASF1B; Anti-silencing function protein 1 homolog B; hAsf1; hAsf1b; CCG1-interacting factor A-II; CIA-II; hCIA-II

This product is for research use only, not for use in human, therapeutic or diagnostic procedure.

Background

ASF1B (anti-silencing function 1B histone chaperone) encodes a member of the H3/H4 family of histone chaperone proteins and is similar to the anti-silencing function-1 gene in yeast. The encoded protein is the substrate of the tousel-like kinase family of cell cycle-regulated kinases, and may play a key role in modulating the nucleosome structure of chromatin by ensuring a constant supply of histones at sites of nucleosome assembly.

Recommended Dilution

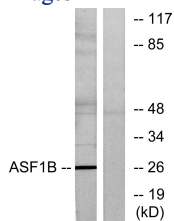
WB: 1: 500 - 1: 2000

IHC: 1: 100 - 1: 300

ELISA: 1: 5000

Not yet tested in other applications.

Images



Western blot analysis of lysates from K562 cells, using ASF1B Antibody. The lane on the right is blocked with the synthesized peptide.

Storage

-20°C for one year