

## FANCA(Phospho Ser1149) Polyclonal Antibody

### Description

|                                |                                                                                                                                                |
|--------------------------------|------------------------------------------------------------------------------------------------------------------------------------------------|
| <b>Product type</b>            | Primary Antibody                                                                                                                               |
| <b>Code</b>                    | BT-AP00680                                                                                                                                     |
| <b>Host</b>                    | Rabbit                                                                                                                                         |
| <b>Isotype</b>                 | IgG                                                                                                                                            |
| <b>Size</b>                    | 100ul, 50ul, 20ul                                                                                                                              |
| <b>Immunogen</b>               | The antiserum was produced against synthesized peptide derived from human FANCA around the phosphorylation site of Ser1149. AA range:1121-1170 |
| <b>Mol wt</b>                  | 162775                                                                                                                                         |
| <b>Species reactivity</b>      | Human, Rat, Mouse                                                                                                                              |
| <b>Clonality</b>               | Polyclonal                                                                                                                                     |
| <b>Recommended application</b> | WB, IHC-p, IF, ICC, ELISA                                                                                                                      |
| <b>Concentration</b>           | 1 mg/ml                                                                                                                                        |
| <b>Full name</b>               | Fanconi anemia group A protein                                                                                                                 |
| <b>Synonyms</b>                | Fanconi anemia group A protein; FANCA; FAA; FACA; FANCH; Fanconi anemia group A protein; Protein FACA                                          |

**This product is for research use only, not for use in human, therapeutic or diagnostic procedure.**

### Background

The Fanconi anemia complementation group (FANC) currently includes FANCA, FANCB, FANCC, FANCD1 (also called BRCA2), FANCD2, FANCE, FANCF, FANCG, FANCL, FANCI, FANCD1 (also called BRIP1), FANCL, FANCM and FANCN (also called PALB2). The previously defined group FANCH is the same as FANCA. Fanconi anemia is a genetically heterogeneous recessive disorder characterized by cytogenetic instability, hypersensitivity to DNA crosslinking agents, increased chromosomal breakage, and defective DNA repair. The members of the Fanconi anemia complementation group do not share sequence similarity; they are related by their assembly into a common nuclear protein complex. This gene encodes the protein for complementation group A. Alternative splicing results in multiple transcript variants encoding different isoforms. Mutations in this gene are the most common cause of Fanconi anemia.

### Recommended Dilution

WB: 1: 500 - 1: 2000

IHC-p: 1: 100 - 1: 300

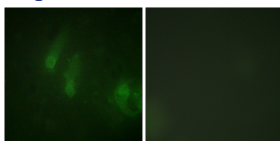
IF: 1: 200 - 1: 1000

ICC: 1: 200 - 1: 1000

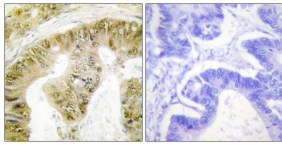
ELISA: 1: 5000

Not yet tested in other applications.

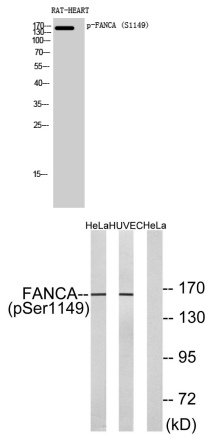
### Images



Immunofluorescence analysis of HeLa cells, using FANCA (Phospho-Ser1149) Antibody. The picture on the right is blocked with the phospho peptide.



Immunohistochemistry analysis of paraffin-embedded human colon carcinoma, using FANCA (Phospho-Ser1149) Antibody. The picture on the right is blocked with the phospho peptide.



Western Blot analysis of RAT-HEART cells using Phospho-FANCA (S1149) Polyclonal Antibody diluted at 1:500

Western blot analysis of lysates from HeLa cells treated with IGF 100ng/ml 10' and HUVEC cells treated with EGF 200ng/ml 30', using FANCA (Phospho-Ser1149) Antibody. The lane on the right is blocked with the phospho peptide.

### Storage

-20°C for 1 year

501 Changsheng S Rd, Nanhu Dist, Jiaxing, Zhejiang, China

Tel: 86 21 31007137 | E-mail: [save@bt-laboratory.com](mailto:save@bt-laboratory.com) | [www.bt-laboratory.com](http://www.bt-laboratory.com)