

## Ataxin-7L1 Polyclonal Antibody

### Description

<b>Product type</b>	Primary Antibody
<b>Code</b>	BT-AP00688
<b>Host</b>	Rabbit
<b>Isotype</b>	IgG
<b>Size</b>	20ul, 50ul, 100ul
<b>Immunogen</b>	The antiserum was produced against synthesized peptide derived from human ATXN7L1. AA range:441-490
<b>Mol wt</b>	88598
<b>Species reactivity</b>	Human, Mouse
<b>Clonality</b>	Polyclonal
<b>Recommended application</b>	IHC-p, ELISA
<b>Concentration</b>	1 mg/ml
<b>Full name</b>	Ataxin-7L1 Antibody
<b>Synonyms</b>	ATXN7L1; ATXN7L4; KIAA1218; Ataxin-7-like protein 1; Ataxin-7-like protein 4

**This product is for research use only, not for use in human, therapeutic or diagnostic procedure.**

### Background

ATXN7L3 (ataxin-7-like protein 3) is a 347 amino acid transcription protein that belongs to the SGF11 family. ATXN7L3 localizes to nucleus and contains one SCA7 domain and one SGF11-type zinc finger. The SGF11-type zinc finger of ATXN7L3 mediates the interaction with USP22 and ENY2. ATXN7L3 is a component of the transcription regulatory histone acetylation (HAT) complex SAGA, which is a multiprotein complex that activates transcription by remodeling chromatin and mediating histone acetylation and deubiquitination. Within the SAGA complex, ATXN7L3 contributes to a subcomplex that specifically deubiquitinates both histones H2A and H2B. The ATXN7L3 gene exists as two alternatively spliced isoforms, is conserved in chimpanzee, dog, cow, rat, zebrafish, fruit fly and mosquito, and maps to human chromosome 17q21.1.

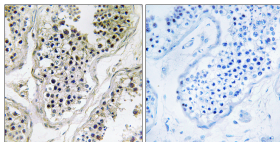
### Recommended Dilution

IHC: 1: 100 - 1: 300

ELISA: 1: 10000

Not yet tested in other applications.

### Images



Immunohistochemistry analysis of paraffin-embedded human testis tissue, using ATXN7L1 Antibody. The picture on the right is blocked with the synthesized peptide.

### Storage

-20°C for one year