

ATBF1 Polyclonal Antibody

Description

Product type	Primary Antibody
Code	BT-AP00689
Host	Rabbit
Isotype	IgG
Size	20ul, 50ul, 100ul
Immunogen	The antiserum was produced against synthesized peptide derived from human ZFHX3. AA range:761-810
Mol wt	404419
Species reactivity	Human, Mouse
Clonality	Polyclonal
Recommended application	IHC-p, ELISA
Concentration	1 mg/ml
Full name	ATBF1 Antibody
Synonyms	ZFHX3; ATBF1; Zinc finger homeobox protein 3; AT motif-binding factor; AT-binding transcription factor 1; Alpha-fetoprotein enhancer-binding protein; Zinc finger homeodomain protein 3; ZFH-3

This product is for research use only, not for use in human, therapeutic or diagnostic procedure.

Background

ZFHX3 encodes a transcription factor with multiple homeodomains and zinc finger motifs, and regulates myogenic and neuronal differentiation. The encoded protein suppresses expression of the alpha-fetoprotein gene by binding to an AT-rich enhancer motif. The protein has also been shown to negatively regulate c-Myb, and transactivate the cell cycle inhibitor cyclin-dependent kinase inhibitor 1A (also known as p21CIP1). ZFHX3 is reported to function as a tumor suppressor in several cancers, and sequence variants of this gene are also associated with atrial fibrillation. Multiple transcript variants expressed from alternate promoters and encoding different isoforms have been found for this gene.

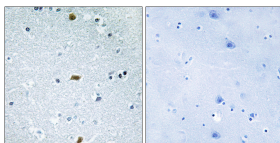
Recommended Dilution

IHC: 1: 100 - 1: 300

ELISA: 1: 10000

Not yet tested in other applications.

Images



Immunohistochemistry analysis of paraffin-embedded human brain tissue, using ZFHX3 Antibody.

The picture on the right is blocked with the synthesized peptide.

Storage

-20°C for one year