

ATF-1 Polyclonal Antibody

Description

Product type	Primary Antibody
Code	BT-AP00692
Host	Rabbit
Isotype	IgG
Size	20ul, 50ul, 100ul
Immunogen	The antiserum was produced against synthesized peptide derived from human ATF1. AA range:31-80
Mol wt	29233
Species reactivity	Human, Mouse
Clonality	Polyclonal
Recommended application	WB, IHC-p, ELISA
Concentration	1 mg/ml
Full name	ATF-1 Antibody
Synonyms	ATF1; Cyclic AMP-dependent transcription factor ATF-1; cAMP-dependent transcription factor ATF-1; Activating transcription factor 1; Protein TREB36

This product is for research use only, not for use in human, therapeutic or diagnostic procedure.

Background

ATF1 encodes an activating transcription factor, which belongs to the ATF subfamily and bZIP (basic-region leucine zipper) family. It influences cellular physiologic processes by regulating the expression of downstream target genes, which are related to growth, survival, and other cellular activities. This protein is phosphorylated at serine 63 in its kinase-inducible domain by serine/threonine kinases, cAMP-dependent protein kinase A, calmodulin-dependent protein kinase I/II, mitogen- and stress-activated protein kinase and cyclin-dependent kinase 3 (cdk-3). Its phosphorylation enhances its transactivation and transcriptional activities, and enhances cell transformation. Fusion of ATF1 and FUS on chromosome 16 or EWSR1 on chromosome 22 induced by translocation generates chimeric proteins in angiomatoid fibrous histiocytoma and clear cell sarcoma. ATF1 has a pseudogene on chromosome 6.

Recommended Dilution

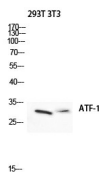
WB: 1: 500 - 1: 2000

IHC: 1: 100 - 1: 300

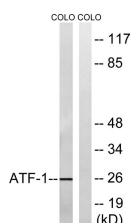
ELISA: 1: 5000

Not yet tested in other applications.

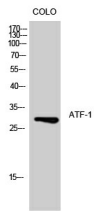
Images



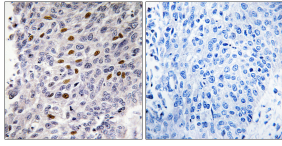
Western blot analysis of 293T 3T3 lysis using ATF-1 antibody. Antibody was diluted at 1:500 cells nucleus.



Western blot analysis of lysates from COLO cells, using ATF1 Antibody. The lane on the right is blocked with the synthesized peptide.



Western Blot analysis of COLO cells using ATF-1 Polyclonal Antibody diluted at 1:500 cells nucleus.



Immunohistochemistry analysis of paraffin-embedded human lung carcinoma tissue, using ATF1 Antibody. The picture on the right is blocked with the synthesized peptide.

Storage

-20°C for one year

501 Changsheng S Rd, Nanhu Dist, Jiaxing, Zhejiang, China

Tel: 86 21 31007137 | E-mail: save@bt-laboratory.com | www.bt-laboratory.com