

## ATF-5 (Acetyl Lys29) Polyclonal Antibody

### Description

<b>Product type</b>	Primary Antibody
<b>Code</b>	BT-AP00701
<b>Host</b>	Rabbit
<b>Isotype</b>	IgG
<b>Size</b>	20ul, 50ul, 100ul
<b>Immunogen</b>	The antiserum was produced against synthesized Acetyl-peptide derived from human ATF5 around the Acetylation site of Lys29. AA range:1-50
<b>Mol wt</b>	30690
<b>Species reactivity</b>	Human, Mouse, Rat
<b>Clonality</b>	Polyclonal
<b>Recommended application</b>	WB, ELISA
<b>Concentration</b>	1 mg/ml
<b>Full name</b>	ATF-5 (Acetyl Lys29) Antibody
<b>Synonyms</b>	ATF5; ATFX; Cyclic AMP-dependent transcription factor ATF-5; cAMP-dependent transcription factor ATF-5; Activating transcription factor 5; Transcription factor ATFx

**This product is for research use only, not for use in human, therapeutic or diagnostic procedure.**

### Background

ATF5 or Activating transcription factor 5, binds to cAMP inducible promoters and is involved in gene transcription. Activating transcription factor 5 binds the cAMP response element (CRE)(consensus: 5'-GTGACGT[AC][AG]-3'), a sequence present in many viral and cellular promoters. ATF5 plays a role in inhibition of nerve growth factor induced neuronal outgrowth and regulation of neurogenesis.

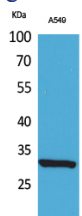
### Recommended Dilution

WB: 1: 500 - 1: 2000

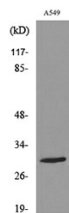
ELISA: 1: 20000

Not yet tested in other applications.

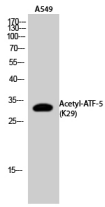
### Images



Western Blot analysis of A549 cells using Acetyl-ATF-5 (K29) Polyclonal Antibody. Secondary antibody was diluted at 1:20000



Western blot analysis of lysate from A549 cells, using ATF5 (Acetyl-Lys29) Antibody.



Western Blot analysis of A549 cells using Acetyl-ATF-5 (K29) Polyclonal Antibody. Secondary antibody was diluted at 1:20000

### Storage

-20°C for one year

501 Changsheng S Rd, Nanhu Dist, Jiaxing, Zhejiang, China

Tel: 86 21 31007137 | E-mail: [save@bt-laboratory.com](mailto:save@bt-laboratory.com) | [www.bt-laboratory.com](http://www.bt-laboratory.com)