

Atg16 Polyclonal Antibody

Description

Product type	Primary Antibody
Code	BT-AP00709
Host	Rabbit
Isotype	IgG
Size	20ul, 50ul, 100ul
Immunogen	Synthesized peptide derived from Atg16 . at AA range: 60-140
Mol wt	68265
Species reactivity	Human
Clonality	Polyclonal
Recommended application	WB, ELISA
Concentration	1 mg/ml
Full name	Atg16 Antibody
Synonyms	ATG16L1; APG16L; Autophagy-related protein 16-1; APG16-like 1

This product is for research use only, not for use in human, therapeutic or diagnostic procedure.

Background

The protein encoded by ATG16L1 (autophagy related 16 like 1) is part of a large protein complex that is necessary for autophagy, the major process by which intracellular components are targeted to lysosomes for degradation. Defects in ATG16L1 are a cause of susceptibility to inflammatory bowel disease type 10 (IBD10). Several transcript variants encoding different isoforms have been found for ATG16L1.

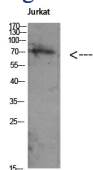
Recommended Dilution

WB: 1: 500 - 1: 2000

ELISA: 1: 5000

Not yet tested in other applications.

Images



Western Blot analysis of Jurkat using Antibody diluted at 1:1000. Secondary antibody was diluted at 1:20000

Storage

-20°C for one year