

Atg16L2 Polyclonal Antibody

Description

Product type	Primary Antibody
Code	BT-AP00710
Host	Rabbit
Isotype	IgG
Size	20ul, 50ul, 100ul
Immunogen	The antiserum was produced against synthesized peptide derived from human ATG16L2. AA range:241-290
Mol wt	68998
Species reactivity	Human
Clonality	Polyclonal
Recommended application	WB, ELISA
Concentration	1 mg/ml
Full name	Atg16L2 Antibody
Synonyms	ATG16L2; WDR80; Autophagy-related protein 16-2; APG16-like 2; WD repeat-containing protein 80

This product is for research use only, not for use in human, therapeutic or diagnostic procedure.

Background

ATG16L2 also named as Autophagy related protein 16-2 is a 619 amino-acid protein, Which belongs to the WD repeat ATG16 family. ATG16L2 contains 7 WD repeats and localizes in the cytoplasm. There are three isoforms of ATG16L2 and the molecular weight of three isoform is respectively 69kDa, 56kDa and 31kDa. ATG16L2 may play a role in autophagy.

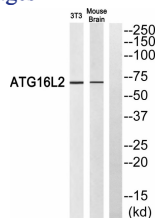
Recommended Dilution

WB: 1: 500 - 1: 2000

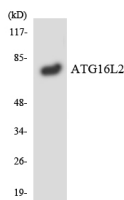
ELISA: 1: 20000

Not yet tested in other applications.

Images



Western blot analysis of ATG16L2 Antibody. The lane on the right is blocked with the ATG16L2 peptide.



Western blot analysis of the lysates from RAW264.7 cells using ATG16L2 antibody.

Storage

-20°C for one year

501 Changsheng S Rd, Nanhu Dist, Jiaxing, Zhejiang, China

Tel: 86 21 31007137 | E-mail: save@bt-laboratory.com | www.bt-laboratory.com